

WELCOME TO THE WORLD OF RAPPLE

HAIR  
BEAUTY  
BARBER

2025/26 CATALOGUE

FURNITURE  
ACCESSORIES  
EQUIPMENT  
PRODUCTS  
ELECTRONICS

**RAPPLE** SALON PRODUCTS  
HAIR, BEAUTY & BARBER

[WWW.RAPPLE.CO.ZA](http://WWW.RAPPLE.CO.ZA)

Stock subject to availability | Colours may vary | Images for illustrative purposes only

# INDEX

3 - 4	Styling Chairs
5	Cutting Stools & Shampoo Units
6	Shampoo Units
7	Basins
8	Trolleys & Mirrors
10 - 16	Barber Chairs
18 - 20	Parts & Extras
22 - 34	Accessories   Hair Salon & Barber
36 - 37	UNCUT (by Rapple) Professional Hair Products
39 - 40	Beauty , Nails & Spa   Furniture, Equipment & Uniforms
41 - 42	Beauty, Nails & Spa   Disposables, Products & Accessories
43	Premium Textile   Wax ( Zinc, Gold, Forest Fruit)
44 - 46	Ro.ial   Skincare Products (Wax, Lotion & oil)
47 - 50	Dexe Products   Skin & Hair Products
51 - 52	Go Care   Professional Hair Products
53	B-TOX Smoothing System   Hair Care Products
54 - 56	Brazilian Gold   Professional Hair Products & Equipment
57 - 60	O'Care   Professional Hair Products
61 - 73	Milkshake   Hair Products (Colour, Care & Treatments)
74 - 83	Nouvelle   Professional Hair Products (Colour, Care & Treatments)
84 - 93	Silky Technobasic   Professional Hair Products (Colour, Care & Treatments)
94 - 97	Ossion   Professional Barber Products
98 - 109	Wahl   Clippers & Trimmers
110	Barber Pole
111	Ribalta   Hooded Dryers
112 - 133	Kiepe Professional   Hair & Beauty (Tools & Accessories)
134 - 137	Veaudry   Hair Equipment (Flat Irons   Curlers   Hair Dryers)
138 - 147	Dapper & Dainty   Hair Brushes



# HAIR SALON & BARBERSHOP FURNITURE

**RAPPLE** SALON PRODUCTS  
HAIR, BEAUTY & BARBER

Stock subject to availability | Colours may vary | Images for illustrative purposes only





Styling Chair      Sleek  
Black                      SLE8349B



Styling Chair      Sleek  
White                      SLE8349W



Styling Chair      Stylo  
Black                      STYLO8309B



Styling Chair      Stylo  
White                      STYLO8309W



Styling Chair      Andre  
Black                      AND8160BL



Styling Chair      Alexa  
Black                      ALE6969BL



Styling Chair      Shrike Limited  
Black                      STR207



Styling Chair      Shrike Limited  
White                      STR206W



Styling Chair      Shrike Limited  
Brown                      STR207BR



Styling Chair      Shrike Limited  
Tan                      STR207T



Styling Chair      Shrike Limited  
Pink                      SAV8713CR



Styling Chair      Savannah  
Cream                      SAV8713CR





Styling Chair

Black

Savannah

SAV8713



Styling Chair

Black

Leno

LENO8395B



Styling Chair

White

Leno

LENO8395W



Styling Chair

Black

Lexi

LEX6369BL



Styling Chair

Black

River

RIV816BL



Styling Chair

Red

Kido Car

KID102



Styling Chair

Black

Kido Car

KID104B



Styling Chair

White

Kido Car

KID102

Standard Collection

PVC Leather  
Hydraulic Pump

Premium Collection

PVC Leather  
16cm Hydraulic Pump  
Moulded Foam

Footrest Options

Hanging / Floor Bar  
Removable Footrest

Base Options

Chrome  
5 star / Round / Square

Stainless Steel  
Round / Square





Make-Up Chair  
Black MAMTBL



Cutting Stool Sam  
Black S1643B



Cutting Stool Mia  
Black M1637B



Cutting Stool Kai - Extra High  
White KAI7261W



Cutting Stool Kai - Extra High  
Black KAI7261



Cutting Stool Lena  
Black LENA706B



Cutting Stool Lena  
White LENA706W



Hydro Shampoo & Foot Spa Bed  
Black with black stitching HYD2027



Shampoo Unit Roundo  
Black ROU961b



Shampoo Unit Roundo  
White ROU961

Scan QR



Standard Range

PVC Leather  
5-Star Wheel Base  
Hydraulic Pump

Premium Range

PVC Leather  
5-Star Wheel Base  
Hydraulic Pump  
Moulded Foam



Shampoo Unit Nancy  
Black with White Stitching    NAN3032



Shampoo Unit Nancy  
Black    NAN3032



Shampoo Unit Layla  
Black with White Stitching    LAY3019BW



Shampoo Unit Layla  
Black    LAY3019B



Shampoo Unit Suzy  
Black with White Stitching    SUZ3045



Shampoo Unit Cheri  
Black    CHE3037



Shampoo Unit Serena  
Black with Gold Frame    SERMTBL



Shampoo Unit Xander  
Black    XAN2930BI



Shampoo Unit Dante  
Black    DAN2919



Shampoo Unit Urma  
Black    URM911B



Shampoo Unit Delilah  
Black    DELMT148



Shampoo Unit Parlo  
Black    PAR935BL







Portable Basin

Black

Atlas  
AQU88



Ceramic Basin

Black

013  
BAS013B



Ceramic Basin

White

013  
BAS013W



Ceramic Basin

White

0356  
BAS0356W



Ceramic Basin

Black

0356  
BAS0356B



Ceramic Basin

Black

019  
BAS019B



Ceramic Basin

White

031  
BAS031W



Ceramic Basin

Black

031  
BAS031B



Trolley

Trento

Black

TRET006



Trolley

Marc

Black

MAR260



Trolley

Falcon

Black

FAL252



Trolley

Tony - Tint

Black

TONT140



Trolley

Capri

Black

Capri15



Trolley

Sally

Black

SALT100X



Trolley

Stella - Laundry Bin

Black

STEMT73



Trolley

Skyla

Black

SKBM3600



Mirror Station

Halo

Brown

HAL001



Mirror Station

Komo

Brown

KOM002



# BARBER CHAIRS

**RAPPLE** SALON PRODUCTS  
HAIR, BEAUTY & BARBER

Stock subject to availability | Colours may vary | Images for illustrative purposes only

Scan QR





# CHARLES

CHA9147



110 x 73 x 114cm



**Available Colours**  
Black / Maroon / Brown



**Hydraulic Pump**  
1 year guarantee



**Fabric & Materials**  
PVC Leather  
Chrome Base



**Features**  
Removable headrest  
Extendable Footrest  
Reclining Chair  
Tilting Gas Pump



**Special Features**  
Steel Frame

# EDWARD

EDW9138



122 x 73 x 105cm



**Available Colours**  
Black  
Maroon



**Hydraulic Pump**  
1 year guarantee



**Fabric & Materials**  
PVC Leather  
Chrome Base



**Features**  
Removable headrest  
Extendable Footrest  
Reclining Chair  
Tilting Gas Pump



**Special Features**  
Aluminium Alloy Frame

# EROS

ERO31312BL



Premium  
Collection



**Available Colours**

Black



**Hydraulic Pump**  
1 year guarantee



**Fabric & Materials**  
PVC Leather  
Chrome Base



**Features**  
Removable headrest  
Footrest  
Reclining Chair  
Tilting Gas Pump



**Special Features**  
Barber or Styling Chair

# HAMPTON

HAMMT9928



**Available Colours**

Black



**Hydraulic Pump**  
1 year guarantee



**Fabric & Materials**  
PVC Leather  
Chrome Base  
Moulded Foam



**Features**  
Removable headrest  
Removable Hanging  
Footrest  
Reclining Chair  
Tilting Gas Pump



**Special Features**  
Compact for smaller  
salons / barber shops

# HARPER

HAR31558BL



Premium  
Collection



**Available Colours**  
Black



**Hydraulic Pump**  
1 year guarantee



**Fabric & Materials**  
PVC Leather  
Chrome Base  
Moulded Foam



**Features**  
Removable headrest  
Removable Hanging  
Footrest  
Reclining Chair  
Tilting Gas Pump



**Special Features**  
Compact for smaller  
salons / barber shops

# HESTON

HES3328



Premium  
Collection



**Available Colours**  
Black



**Hydraulic Pump**  
1 year guarantee



**Fabric & Materials**  
PVC Leather  
Chrome Base  
Moulded Foam



**Features**  
Removable headrest  
Removable Hanging  
Footrest  
Reclining Chair  
Tilting Gas Pump



**Special Features**  
Compact for smaller  
salons / barber shops

71 x 66 x 98cm



# JAGGER

JAG31853BBR

Premium  
Collection



**Available Colours**  
Black & Bronze



**Hydraulic Pump**  
1 year guarantee



**Fabric & Materials**  
PVC Leather  
Chrome Base  
Moulded Foam



**Features**  
Removable headrest  
Footrest  
Reclining Chair  
Tilting Gas Pump



**Special Features**  
Steel Frame

# PANTHER

PAN31839BL

Premium  
Collection



**Available Colours**  
Black



**Hydraulic Pump**  
1 year guarantee



**Fabric & Materials**  
PVC Leather  
Chrome Base



**Features**  
Removable headrest  
Extendable Footrest  
Reclining Chair  
Tilting Gas Pump



**Special Features**  
Steel Frame

R E M U S

REM5258



188 x 67 x 106cm

Premium  
Collection



Available Colours

Full Matte Black  
Black & Silver



Hydraulic Pump

1 year guarantee



Fabric & Materials

PVC Leather  
Chrome Base  
Moulded Foam



Features

Removable headrest  
Extendable Footrest  
Reclining Chair  
Tilting Gas Pump



Special Features

Premium Collection  
Full Matte Black Finishes

R I C A R D O

RIC6803



70 x 60 x 95cm



Available Colours

Black  
Brown



Hydraulic Pump

1 year guarantee



Fabric & Materials

PVC Leather  
Chrome Base



Features

Removable headrest  
Removable Hanging  
Footrest  
Reclining Chair  
Tilting Gas Pump



Special Features

Styling OR Barber Chair

# R I C A R D O

RIC6803



**Available Colours**

Black  
Brown



**Hydraulic Pump**

1 year guarantee



**Fabric & Materials**

PVC Leather  
Chrome Base



**Features**

Removable headrest  
Removable Hanging  
Footrest  
Reclining Chair  
Tilting Gas Pump



**Special Features**

Styling OR Barber Chair

# T H O R

THOR6885



**Available Colours**

Black  
Brown with White trim



**Hydraulic Pump**

1 year guarantee



**Fabric & Materials**

PVC Leather  
Chrome Base



**Removable Headrest**



**Extendable Footrest**

115 x 76 x 105cm



# TRISTAN

TRIS31307BL



Premium  
Collection



Available Colours  
Black



Hydraulic Pump  
1 year guarantee



Fabric & Materials  
PVC Leather  
Chrome Base



Removable Headrest



Extendable Footrest



## BRANDS WE STOCK

- MILKSHAKE
- NOUVELLE
- O'CARE
- KIEPE PROFESSIONAL
- WAHL PROFESSIONAL
- DEXE
- VEAUDRY
- UNCUT
- OSSION

## SOME ITEMS WE STOCK

- RAZORS & SCISSORS
- COMBS & BRUSHES
- CAPES & APRONS
- BARBER CHAIRS
- CLIPPERS
- HAIR STYLING PRODUCTS
- ACCESSORIES



# RAPPLE

## SALON PRODUCTS

HAIR, BEAUTY & BARBER

JOHANNESBURG SHOWROOM

UNIT B1 DECO PARK

NORTHLANDS

NORTHRIDING

JOHANNESBURG

+27 10 085 0787

CAPE TOWN SHOWROOM

313 DURBAN ROAD

UNIT 3 (SUNTYGER, TYGER VALLEY)

BELLVILLE

CAPE TOWN

+27 21 981 0032

ORDERS@RAPPLE.CO.ZA

WWW.RAPPLE.CO.ZA



PARTS /  
EXTRAS

**RAPPLE** SALON PRODUCTS  
HAIR, BEAUTY & BARBER

Stock subject to availability | Colours may vary | Images for illustrative purposes only



Booster Cushion

Black

Kiddies

KID2252



Booster Cushion

Brown

Kiddies

KID2253



Footrest

Black

Ottoman

OTTO9916B



Footrest

Chrome

Hanging

FOOTA10



Footrest

Chrome

Wide - Floor Bar

A12



Hydraulic not included

Styling Chair Base Only

Chrome

5-star

BASEJ



Barber Chair Base

Chrome

68cm

BASA



Hydraulic not included

Styling Chair Base

Chrome

50cm

BASD



Hydraulic not included

Styling Chair Base

Stainless Steel

52cm

BASG



Hydraulic not included

Styling Chair Base

Chrome

50cm

BASF




Hydraulic not included

Styling Chair Base

Stainless Steel

50cm

BASC



Hydraulic Pump

Barber

HYDR02BARBER





Hydraulic Pump 50cm - Styling  
4-hole

HYDR04STYL



Hydraulic Pump 50cm - Styling  
6-hole

HYD02



Hydraulic Pump 35cm - Styling  
6-hole

HYD01



Tilting Mechanism  
Basin

TILT01



Basin Weir  
Stainless Steel

WEIQ5



Mixer Tap  
Long Nose

Brass  
MIX05



Shower Head & Flexi Hose  
Chrome - Black

SHO103



Mixer Tap  
Short Nose

Brass  
MIX05



Shower Head & Flexi Hose  
Chrome - Silver

SHOQ9



Outlet Pipe  
With Connector

Grey  
FLE01SG



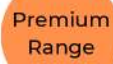
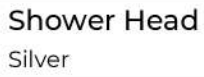
Pipe for Shower Head  
Black

PIPPB01



Pipe for Shower Head  
Chrome

PIPPC01





# HAIR & BARBER ACCESSORIES

**RAPPLE** SALON PRODUCTS  
HAIR, BEAUTY & BARBER

Stock subject to availability | Colours may vary | Images for illustrative purposes only





Cutting Cape

White & Black

Stripes

CAPJ47



Cutting Cape

Black with White Print

Salon Pattern

CAPJ42



Cutting Cape

White, Red & Blue

Barber Pattern

CAPJ54



Cutting Cape

Black & White

Moustache

CAPJ61



Cutting Cape

Black & White

Beard

CAPJ58



Cutting Cape

White with Black Print

Barber Pattern

CAPJ67



Cutting Cape

Black

Nylon with strings

CAP01



Kiddies Cape

Pink

Animation

CAPK02



Kiddies Cape

Blue

Dalmatians

CAPK03




Kiddies Cape

Yellow

Dalmatians

CAPK01



Cutting Cape

White & Green

Stripes & Picture

CAPJ28



Cutting Cape

Black

Fresh Cut

CAPJ40



Cutting Cape     Dapper Barber

White & Black     CAPJ36



Cutting Cape     The Barber

Black & White     CAPJ06



Cutting Cape     Fresh Cut

Black & White Stripes     CAPJ60



Apron     Double Sided

Black     CAP17



Apron     Cindy Coverall

Black / Navy / White     CIA1MST



Barber Apron     Soft Leather

Brown     APRH-42



Barber Apron     Soft Denim

Blue Denim     APRH-43



Barber Apron     Soft Denim

Blue Denim     APRH17



Spray Bottle     600ml

SPRA17



Spray Bottle     300ml

Silver     SPRA5



Spray Bottle     300ml

Black     SPRA5B



Spray Bottle - Mist     300ml

White     SPRA93



Spray Bottle - Mist300ml

BlackSPRA93B



Spray Bottle - Mist300ml

Red+Blue+WhiteSPRA96B



Spray Bottle - Mist300ml

Black+WhiteSPRA96A



Spray Bottle - Mist300ml

Black+WhiteSPRA9N



Spray Bottle650ml

BlackSPRA101BR



Spray Bottle650ml

BrownSPRA101BR



Tint Bowl210ml

BlackTINB6A



Colour Mixer

AssortedMIX01



Colour Mixer

AssortedMIXQ10



Tube Squeezer

AluminiumSilverSQU0118



Key Tube Squeezer

SilverSQU0122B



Colouring Board

BlackLargeCOBD50





Balayage Board                      Large  
Black                                      COB201



Applicator Bottle                      220ml  
Clear                                      APP105



Measuring Cup                      100ml  
Clear                                      MEA32A



Processing Cap                      PCN91  
Silver / Gold



Shower Cap                      SCP19  
White with pink roses



Highlight Cap                      Magic Cap  
Assorted                                      HLN94



Timer                      Mechanical  
Black                                      TIMO45



Square Salon Scale                      Digital  
Silver                                      SCAQ30



Foil Dispenser                      FOIO120B  
Black



Foil Dispenser                      FOIO120  
White



Aluminium Foil                      10cm / 250g  
FOIG5



Scissor Box / Holder                      BOXQ52AB/W  
Black / White



Super Shave  
Stainless Steel

200 Blades  
SUPX200



Super Shave  
Stainless Steel

10 Blades  
SUPX10



Heat Resistant Pad  
Green

Silicone  
HPL20



Heat Resistant Pad  
Black

Silicone  
HP2639



Heat Resistant Pad  
Black - 30 x 15cm

Silicone  
HEP101



Heat Resistant Pad  
Blue & Black

Silicone  
HPL19



Heat Resistant Pad  
Black with Barber Print

Silicone  
CLAY51



Mannequin Clamp  
White

CLAY51



Mannequin Clamp  
Black

CLAY51B



Mannequin Tripod Stand  
Black

TRIR18



Mannequin Head  
12" Barber

MAN2876



Mannequin Head  
18" Salon

MANP31



Mannequin Head      Bald  
MANL05



Clipper Holder      Table Stand  
Black      CHQ106



Clipper Holder      Wall Mount  
Black      CHQ107



Cutting Collar      Big Magnets  
Black      COLH20



Cutting Collar      No Magnets  
Black with Stripes      COLH11



Barber Kit      4pc Set  
BKITP1



Cutting Collar      Magnets  
Black      COLH18



Perm Neck Tray  
Black      PERB40



Wave Sponge  
Black      SPQ125



Perm Sponges  
PERG109



Double Grip Mirror      Foam  
Black      MIRP1



Round Mirror      Plastic  
Black      MIRP9





TRU Barber Hair Grips      2pc  
Black                              MASKO49A



Neck Paper                              5pc  
White                              NECM45



Neck Paper Roll Holder  
Black                              NECM44B



Dryer Holder      Wall Mounted  
Silver                              DRYY23



Dryer Holder      Table Stand  
Silver                              HOL009



Dryer Holder      Floor Stand  
Silver & Black                              HOL005



Scalp Massagers      12pc A-Grade  
Black                              SCU018B



Bobby Pin Bracelet      Magnetic  
Black                              ARME32



Bobby Pins                              300pcs  
Black                              BOBD36B



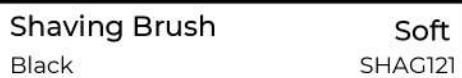
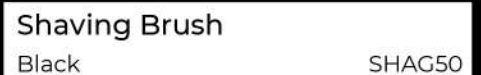
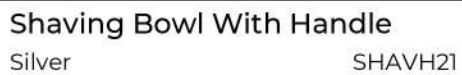
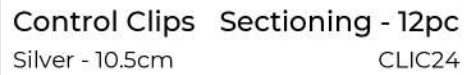
Bobby Pins                              150pcs  
Black/Bronze/Gold      Colour Dependent



Butterfly Jaws                              12pc  
Black                              JAWD22



Crocodile Clips                              10pc  
Assorted                              CLIC52



# TRACELESS HAIR TIES

**less hair damage  
less headaches  
water resistant  
less hair creases**

available in store or online  
product code: KHTBL



PACK OF 3







Shaving Razor

Red+Blue+White

SHAV64



Beard Brush

Assorted

Small

BEAG133



Beard Brush

Dark Brown

Oval

BRUKH80



Beard Brush

Brown

Bamboo

BRUG137



Beard Brush

Dark Brown

BRUG156



Clipper Guards

Assorted

Sizes 1-8

GUA035



Clipper Guards 10pc Magnetic

Black

GUA137



Clipper Cutting / Fading Comb

Black

COMX4B



Beard Brush

Brown

Wave

BEA74



Paddle Brush

Black

PADL15



Paddle Brush

White & Grey

Quick Dry

BRUL94B



Beard Brush

Brown

Small

BEA66



Brush Set  
Black  
Nano Tech  
BRUK129



Brush Set  
White & Grey  
Nano Tech  
BRUL55



Brush Set  
Red & Black  
5pc Mini Curly  
BURL7SET



Vent Brush  
Black  
BRUL5



Comb Set  
Black  
COMK256



Brush Set  
White & Blue  
Nano Tech  
BRUL22



Balayage Comb  
Black With White Bristle  
COMGB



3-in-1 Comb  
Black / Yellow  
COMK238



Brush  
Blue  
Edge Control  
BRUND6



Highlight Comb  
Black  
COMK258



Comb  
Cream  
G01  
COMG01



Comb  
Cream  
G02  
COMG02



Comb  
Cream

G34  
COMG34



Comb  
Cream

G36  
COMG36



Comb  
Cream

G31  
COMG31



Comb  
Cream

G53  
COMG53



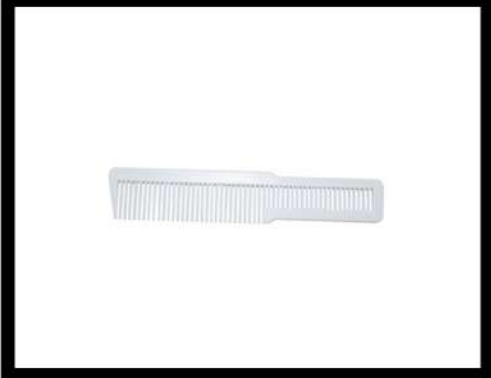
Comb  
Cream

G125  
COMG125



Comb  
Comb

G39  
COMG39



Comb  
White

COMX4W



Beard Comb  
Black

BEAG122A



Flat Top Comb  
Black

With Level  
COMN15



Beard Brush Stand  
Black

BBS0774





Powder Puffer

Silicone

Black

SPQ131



Powder Spray Bottle

Silicone

Black

SPQ128



Disicide Spray

1L Ready to use

D051



Barbello

500ml Concentrate

QBDC001



Trimmercide Spray

400ml

D052



Blade Container

Disposable

Red/Black

BLA2620



Salon Mat

Silicone

Black

SALM2843



Tint Brush

Large - Soft Bristles

Black & White

TINB10



Shampoo Tray

Portable

Black

TRAS07



Disinfectant Jar

1.2L

JAR2651C

*un*CUT.

UNCUT BRAND  
BY RAPPLE

**RAPPLE** SALON PRODUCTS  
HAIR, BEAUTY & BARBER

Stock subject to availability | Colours may vary | Images for illustrative purposes only



Silver Shampoo 1L  
Sulphate Free UNSIL1L



Silver Conditioner 1L  
UNCON1L



Silver Shampoo 5L  
UNSIL5L



Silver Conditioner 5L  
UNSIL5L



Shampoo 5L  
Honeysuckle - Basin SHA5L



Conditioner 5L  
Honeysuckle - Basin UNCON5L



Hairspray 5L  
Yellowmist UNHY5L



Hair Spray 5L  
Rosemist UNBT5L



Hair Tonic 5L  
Bayrum UNBP500G



Oxy Peroxide 1L  
10Vol UNRB125gr



Oxy Peroxide 1L  
20Vol



Oxy Peroxide 1L  
30Vol UNWP250





Bleach Powder 500g  
Blue UNBP500G



Bleach Powder 125g  
Red UNSIL15L



Shine Wax 250ml  
Hair Food UNCON5L/SHA5L



Hair Clay 250ml  
UNHY5L



Hair Clay 50ml  
UNBT5L



Web Paste 250ml  
UNROS5L



Web Paste 200ml  
UNBP500G



Silicone 5L  
UNRB125gr



# BEAUTY, NAILS & SPA

**RAPPLE** SALON PRODUCTS  
HAIR, BEAUTY & BARBER

Stock subject to availability | Colours may vary | Images for illustrative purposes only



Pedicure Station

White

Liz

LIZ192



Pedicure Station

Black

Liz

LIZ192



Pedicure Station

White

Lisa

LISMTW



Indian Massage Chair

White

IND180W



Facial Bed

White

Casey

CAS723



Facial Bed

White

Mary

MAR173



Massage & Facial Bed

White

Terry

TER900



Massage & Facial Bed

Brown

Grace

GRA1795



Portable Massage Bed

Beige / Black

Lucy

LUCY031



Trolley

White

Cascade

CAS3802





Towel Warmer

Hot Cabi

White

SAL022



UV Sterilizer

Equipment

White & Black

SALBE020



Facial Steamer

Ribalta

Black

RIBE01



Facial Steamer

Salon Pro

White

STE003



Mag Lamp

Stand - LED

White

2257



Mag Lamp Clamp Only

White

Z112



Spa Top

Lily

Various Colours and sizes



Spa Top

Madri

Various Colours and sizes



Spa Top

Nicole

Various Colours and sizes



Coverall / Bib

Cindy

Various Colours and sizes



Barber

Gordon Jacket

White

Various sizes



Cellulose Sponges

50pcs

NBESPG005



Tongue Depressor

100pcs

Wooden WAXUNB006



Nail Wipes

200psc

Lint Free N032



Gauze Swabs 100mm x 100mm

GA006



Cotton Wool Balls

500g

White COTL04



Wax Spatula

Stainless Steel DOLL370.843



Disposable Masks

50pcs

fac03



Paraffin Booties

1pair

White C005



Paraffin Mittens

1pair

White C009



Massage Bed Face Covers

100

White BED002



Massage Bed Covers

25pc

White 13235



Primerless Monomer Liquid

Nailz

200ml

ACRNLZ005



Non-Acetone Polish Remover Nailz

1L

NPRNLZ003



Pure Acetone

Nailz

1L

NPRNLZ001



Pure Acetone

Nailz

5L

NPRNLZ002



Non-Acetone Polish Remover Nailz

5L

STONA3012



Polish

Nailz

Assorted Colours

NPONLZ



Base & Top Coat

Nailz

BTQNLZ006



Matte Top Coat - Gel

Nailz

GPBNLZ002



No Wipe Top Coat - Gel

Nailz

GPBNLZ003



Polish - Gel

Nailz

Assorted Colours

GPONLZ



Base - Gel

Nailz

GPBNLZ001



Acrylic Powder

Nailz

Assorted Colours

ACRNLZ





An ideal kit for home users and mobile therapists. It prevents redness and irritation, Strips not included. Ideal for the traveler or for touch-ups between salon treatments.



HD formula that makes it easier to spread. Results are +20% over other common waxes



Wax pot friendly tub & Quick heat  
Microwavable container for that last minute client



Recommended for all skin types.Prevents redness & irritation

Get leg ready this summer with our premium strip wax.





Strip Wax  
Titanium Rose

Ro.ial  
800ml



Strip Wax  
Honey

Ro.ial  
800ml



Strip Wax  
Azulene

Ro.ial  
800ml



Hot Wax  
Yellow Pearls

Ro.ial  
800g



Hot Wax  
Pink Rose Pearls

Ro.ial  
800g



Film Wax  
White Pearls

Ro.ial  
800g



Hot Wax  
Lavender Pearls

Ro.ial  
800g



Hot Wax  
Green Pearls

Ro.ial  
800g



Barber Wax  
Blue Pearls

Ro.ial  
800g



Wax Cartridge  
Azulene

Ro.ial  
100ml



Wax Cartridge  
Black

Ro.ial  
100ml



Wax Cartridge  
Zinc Dioxide

Ro.ial  
100ml



Wax Cartridge

Rose

Ro.ial

100ml



Wax Cartridge

Frutti Red

Ro.ial

100ml



Wax Cartridge

Honey

Ro.ial

100ml



Wax Cartridge

Fine Head

Ro.ial

100ml



Wax Cartridge

Chlorophyll

Ro.ial

100ml



Post Lotion

Aloe-vera

Ro.ial

500ml



Post Milk Lotion

Talc

Ro.ial

500ml



Wax Heater

White

Ro.ial

Single Cartridge



Paper Bed Roll

White

Ro.ial

60cm x 50cm



Post Cleansing Oil

Eucalyptus

Ro.ial

500ml



Post Cleansing Oil

Chamomille

Ro.ial

500ml



Pre Lotion

Rose

Ro.ial

250ml





Waxing Roll  
Perforated

Ro.ial  
80m

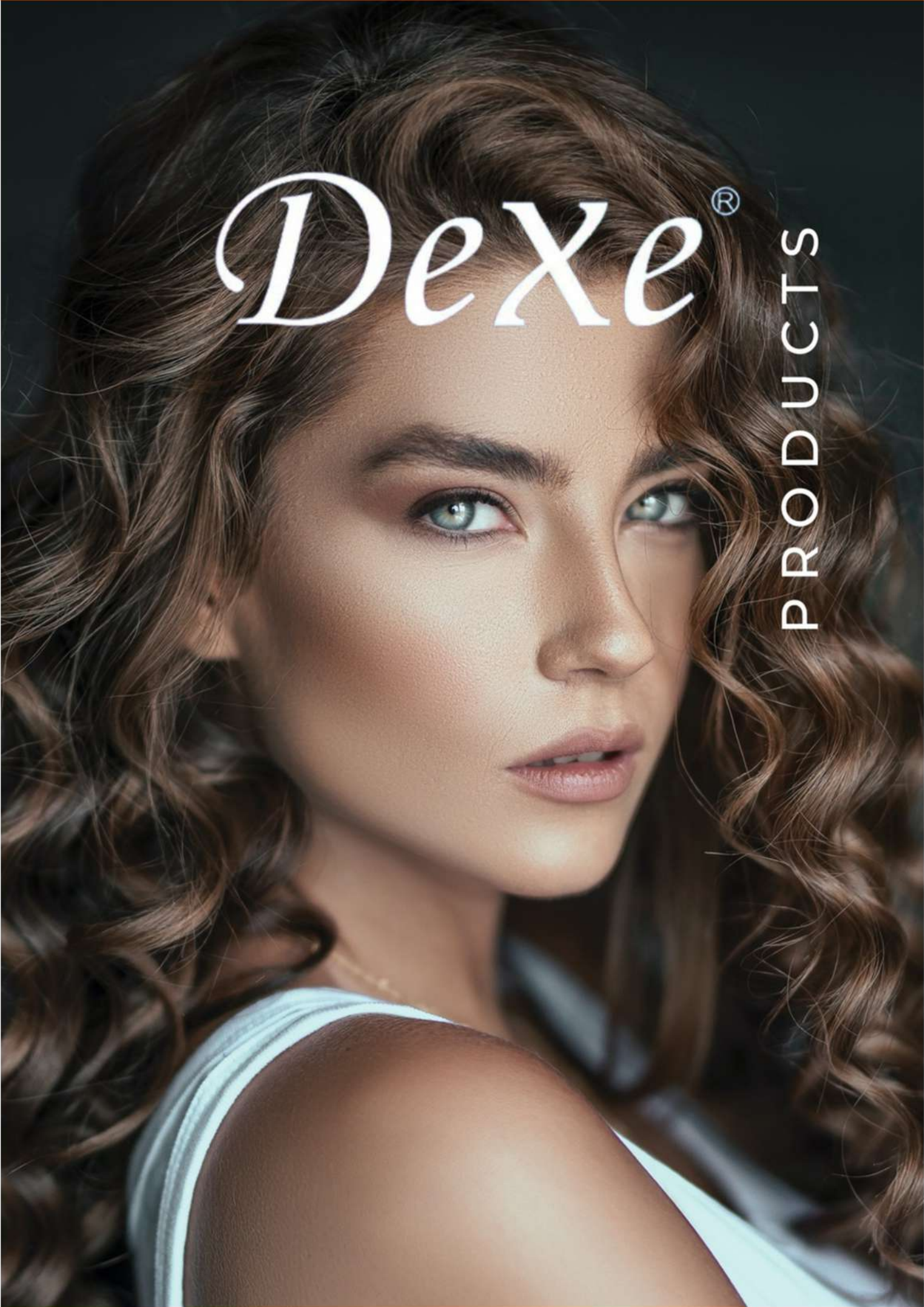


Waxing Roll  
Perforated

Ro.ial  
80m







*Dexe*<sup>®</sup>

PRODUCTS



# Dexe®

## FACE MASK

- **DEEP CLEANSING BLACKHEAD REMOVER WITH TOOL** - Are blackheads, blemishes, and other skincare problems ruining your day? If so, our innovative peel off mask is formulated to boost your skin clarity and help minimize the appearance of your pores by removing dirt, oil, blackheads, and dead skin cells. Simply follow our easy-to-use instructions and see the SATISFYING results of clearer skin. You'll be glad you did!
- **QUALITY YOU CAN TRUST** - Made from safe and natural ingredients such as aqua, glycerin, avocado, natural vitamin E and natural activated bamboo charcoal, our facial mask is 100% safe to use to achieve glowing and clear skin.
- **SKIN PURIFYING & ANTI AGING** - While a majority of other black masks peel off only the tip of the black heads, the activated charcoal in our blackhead mask absorbs dirt and oil deep in your pores giving you the deepest clean. The benefits don't end there: it also gently exfoliates, resulting in softer, healthier, more radiant skin.
- **CONTROL ACNE & WRINKLES TOO** - You'll also enjoy the side benefits of this mask. After using this mask a couple of times, you'll notice that your skin feels smoother and firmer. By drawing out excess oil, your unclogged pores will be able to breathe, preventing acne to form. The added ALOE VERA helps moisturize and tone your skin.
- **BEST VALUE FOR YOUR MONEY** - If you need a quick and easy thoughtful gift for your girlfriend, mom, friend, or loved ones this is the perfect present for them. Have a night in and try the mask with your friends and family and see who has more blackheads.
- **NOURISHING & BRIGHTENING** - Enriched with polypeptide collagen, the mask retains moisture leaving skin silky, smooth and radiant every day!



- Clean dirty
- Remove the blackhead
- Clean pores
- Smooth the skin





# Dexe®

## HAIR BUILDING FIBERS

- **Natural Ingredients:** Dexe advanced keratin hair building fibers are made of natural, colored keratin with vegetable resin fibers - the same protein that makes up human hair, create a stronger natural, thick & textured look that last all day. Natural hair thickener without any annoying side effects.
- **Working Principle:** This product is made up of fine fibers that have a static charge to adhere to the user's hair. This makes each hair to look thicker.
- **Quick and Easy to Use:** Shake the hair fibers liberally over desired areas with the bottle opening facing completely downward. Simply apply to your scalp and the nanofibers will electrostatically couple with your hair within 30 seconds. Then gently pat your hair to disperse fibers throughout the area.
- **Three Color Choices:** Our hair thickening powder for men and women is available in dark brown, medium brown and light brown, thus matching many hair colours.
- **Lasting Effect:** The soft and tiny hair fibres have a natural static charge that help the hair fibres to securely bind with your real hair. It is guaranteed to stay in place for the entire day without budging in wind, humidity or perspiration. You can count on this effective formula of hair fibres to help you regain the confidence that was lost due to hair thinning or hair loss.



**BEFORE & AFTERS.**



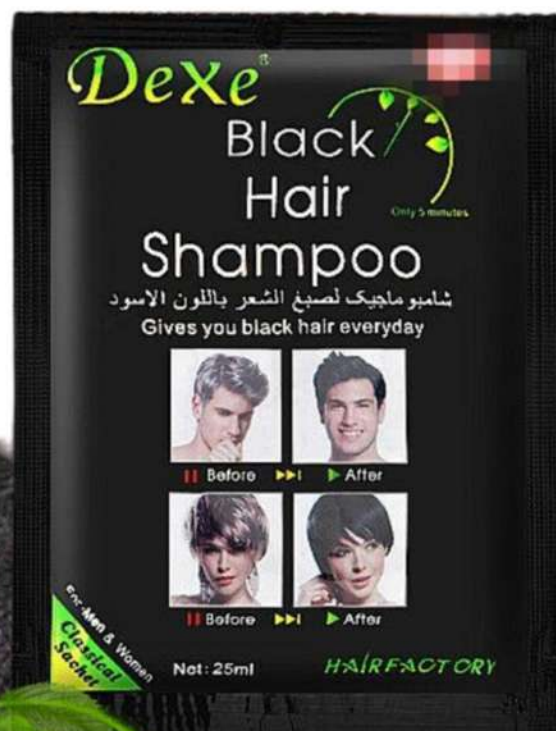
# Dexe®

## SHAMPOO

Convenient Easy in operation, just like using normal shampoo. Time-saving Only one sachet can give you black shining hair in 5 minutes.

3. Cost-saving Compared to the expensive cost of dyeing hair in the hair salon, the hair black shampoo is more than 10 times cheaper.

Natural and mild Best hair shampoo is a hair-care product in a formula of natural luxurious herbal essence, there will be no side effects to your hair or scalp when it gives you black and shining hair.







**GoCare**  
NEW HAIR TECHNOLOGY





## PROFESSIONAL HAIR CARE PRODUCTS

GoCare is a professional multi-functional hair care range formulated with no parabens, sulphates or phosphates. GoCare's balanced and coordinate materials are its basic composition which makes the range ideal for each unique person's hair, providing intensive and systematic care from a range that is 100% organic.



### Go Care Shampoo - Sulfate Free 400ml/1L

A multifunctional shampoo formulated with no paraben, no sulphates, and no phosphates, which makes this shampoo 100% organic. Because of the high concentration of Octopirox it can efficiently control the production of dandruff and itchy scalp even before symptoms appear.



### Go Care One Minute Treatment 400ml/1L

Treatment. Dry, Weak, Dull & Damaged hair.  
The GoCare One Minute Treatment targets nucleoprotein repair technology allowing hydrolysed proteins to penetrate damaged hair to nourish and repair the damaged parts.



### Go Care PPT Leave-in Treatment 100ml

A leave-in treatment containing keratin protein. A daily treatment product, that supplies nourishment for damaged hair with constant moisturizing efficiency.



### Go Care Vitamin Repair Spray 400ml

Treatment Spray. Damaged & Frizzy Hair.  
GoCare Vitamin Repair Spray contains nano-grade, multi-size molecules of silicone which repair the porous surface of the hair shaft. The spray gives you soft & lightweight protection. The natural silk protein minimizes frizz and repair split ends.



### Go Care Shiny Hair Serum 80ml

Serum. Anti-frizz & Sun Protection Treatment.  
The GoCare Shiny Hair Serum is enriched with Argan Oil to provide softness and protection to your hair. UVA-UVB filter prevents colour fading and the natural silk proteins minimize hair frizz and repair split ends.



# Hair Care Products

## NEW B-TOX HAIR STRAIGHTENING TREATMENT

Introducing our new B-Tox treatment for smoother and healthier hair.

Recommend for:

Damaged hair

Boost moisture and shine

Frizzy hair

Split ends

Hair straightening

For professional use only

Available Sizes: 125ml

500ml







# BRAZILIAN GOLD

KERATIN TREATMENT





An innovative formula producing amazing results while nourishing your hair.

#### INGREDIENTS:

Natural Botanicals Complex of Keratin, Protein, Collagen and Argan Oil

#### CONTAINS NO:

Sodium Laureth Sulfate (SLES), Sodium Lauryl Sulfate (SLS) or Parabens

#### Brazilian Gold Shampoo:

- Gentle wash can be used daily
- Ensures long-lasting treatment results
- Leaves hair strong, healthy, shiny and manageable.

#### Brazilian Gold Keratin Treatment:

- Easier Application
- Long Lasting Result

#### Brazilian Gold Repair Mask:

- Intensive conditioning care
- Strengthening and smooths damaged, brittle or unmanageable hair
- Improved elasticity
- Nourishing properties
- Protecting against further damage.
- Hair is left silky, smooth, detangled and fortified with radiant shine.

#### Available Kit Sizes:

- 500ml
- 250ml



An innovative formula producing amazing results while nourishing your hair.

#### INGREDIENTS:

Natural Botanicals Complex of Keratin, Protein, Collagen, Argan Oil and Cacau Butter

#### CONTAINS NO:

Sodium Laureth Sulfate (SLES), Sodium Lauryl Sulfate (SLS) or Parabens

#### Brazilian Gold Shampoo:

- Gentle wash can be used daily
- Ensures long-lasting treatment results
- Leaves hair strong, healthy, shiny and manageable.

#### Brazilian Gold Keratin Treatment - Cacau Enriched:

- Easier Application
- Eliminates frizzy hair leaving it healthy and shiny for up to 4 months

#### Brazilian Gold Repair Mask:

- Intensive conditioning care
- Strengthening and smooths damaged, brittle or unmanageable hair
- Improved elasticity
- Nourishing properties
- Protecting against further damage.
- Hair is left silky, smooth, detangled and fortified with radiant shine.

#### Available Kit Sizes:

- 300ml
- 1L







# O'Care

## PROFESSIONAL

NEW ETHNIC  
RANGE





## Innovation and Science meet Beauty

O'Care Professional, a newly launched salon exclusive range that is 100% black owned. The first hair care regime to provide personalized hair therapy from within. Each product has been carefully formulated to provide the best of hair care.



### O'Care Braid Spray 250ml

O'Care Professional Braid Spray adds moisture and shine to braids and hair-extensions while eliminating dryness and itchy scalp. The spray also helps fight against dandruff buildup before the next hair wash.



### O'Care Oil Moisturiser 200ml

O'Care Professional Oil Moisturiser is infused with a blend of natural oils to moisturise the scalp and deep condition hair in need of a moisture. This moisturiser is suitable as a daily after care of chemically relaxed hair to further repair the damaged hair strands.



### O'Care Bio Silicone Serum 50ml

O'Care Bio-Silicone Serum infused with a natural silicone from Hydrogenated Olive Oil helps to seal and prevent split ends offering superior silky feel and glossy shine while preventing color fading.



### O'Care Scalp Therapy 250ml

#### Revitalize & Nourish Your Scalp

Transform your scalp care routine with O'Care Scalp Treatment, a powerful formula designed to stimulate blood flow, promoting healthier, stronger hair from the roots. This advanced treatment works to hydrate, purify, and unclog hair follicles, ensuring a clean and balanced scalp environment for optimal hair growth.



### O'Care Styling Mousse 200ml

O'Care Professional Styling Mousse Defines curls, gives hold for twists outs, moisturizes dry, brittle hair and leaves your hair feeling soft, conditioned and shiny with regular use.



### O'Care Perm System Kit 500ml

Unlock the secret to Perfect, Bouncy & Luxurious Curls in 3 easy steps! A game-changing system designed to create, define and care for beautiful curls with precision. Crafted for stylists and clients alike, it ensures consistent, stunning results every time.





## Innovation and Science meet Beauty

O'Care Professional, a newly launched salon exclusive range that is 100% black owned. The first hair care regime to provide personalized hair therapy from within. Each product has been carefully formulated to provide the best of hair care.



### O'Care Daily Salon Shampoo 2L

Give your clients the ultimate hair-cleansing experience with our luxurious salon basin shampoo. Designed for professional use, this formula deeply cleanses the scalp, effectively removing excess oil, product buildup, and impurities without stripping away essential moisture.



### O'Care Hydra Hair Food 250ml

O'Care Hydra Hair food infused with Hyaluronic acid and Omega 9 provides an optimum hydration and moisture for the scalp creating an ideal condition for strong and healthy hair growth. Leaves the hair shiny and nourished OPTIMUM CARE for scalp & hair.



### O'Care Hair Rescue Lotion 150ml

O'Care Professional Hair Rescue has been carefully researched and formulated to help renew, rescue, increase density and thickness of hair. The powerful Hyaluronic acid helps to seal the cuticle while locking in the moisture and the blends of keratin proteins deposited by the lotion.



### O'Care Curl Activator Gel 200ml

O'Care Professional Curl Activator Gel is enriched with Aloe vera extract to naturally define and deposit moisture on curls while keeping them shiny and bouncy the whole day. This gel is a light-weight formula that penetrates quickly and easily absorbed into the hair without flakes. NO MINERAL OIL, NO PARABENS, NO PETROLATUM.



### O'Care Curl Sheen Spray 200ml

O'Care Professional Curl Activator Gel is enriched with Aloe vera extract to naturally define and deposit moisture on curls while keeping them shiny and bouncy the whole day.

This gel is a light-weight formula that penetrates quickly and easily absorbed into the hair without flakes. NO MINERAL OIL, NO PARABENS, NO PETROLATUM.







## Innovation and Science meet Beauty

O'Care Professional, a newly launched salon exclusive range that is 100% black owned. The first hair care regime to provide personalized hair therapy from within. Each product has been carefully formulated to provide the best of hair care.

### O'Care Styling Gel 450ml



O'Care Professional Styling Gel with Hyaluronic Acid was formulated to give maximum control over your hair without flaking and leaving residues. It leaves the hair with an intense shine that that will last for longer.

### O'Care Hai Fiber Treatment 1L



O'Care Professional Hair Fiber Treatment formula specially designed to deposit cationic charge to intnsesivley repair damaged hair while nourishing and protecting it against split ends and breakage. You will notice healthy feeling hair from the first treatment: perfectly smooth, manageable and full of amazing shine.

### O'Care Relaxer Duo Pack 2.5kg + 1L



O'Care Professional Neutralizing Shampoo gently cleanse and strengthen the chemically relaxed hair while restoring the natural pH preventing further damages to the hair.

#### Original Lithium Hydroxide Relaxer

This chemical relaxer works best with normal to medum hair. A hair relaxer for curly hair effective on a range of curl types, from loose waves to curls and coils, providing consistent results without scalp irritation. This well PH balanced Lithium Hydroxide relaxer formula has been carefully researched and developed to offer the best safe and comfort experience while straightening and smoothing hair that is thicker and difficult to manage.

### O'Care Relaxer Duo Pack 500g + 150ml



O'Care Professional Neutralizing Shampoo gently cleanse and strengthen the chemically relaxed hair while restoring the natural pH preventing further damages to the hair.

#### Original Lithium Hydroxide Relaxer

This chemical relaxer works best with normal to medum hair. A hair relaxer for curly hair effective on a range of curl types, from loose waves to curls and coils, providing consistent results without scalp irritation. This well PH balanced Lithium Hydroxide relaxer formula has been carefully researched and developed to offer the best safe and comfort experience while straightening and smoothing hair that is thicker and difficult to manage.







**milk  
shake<sup>®</sup>**  
NATURAL BEAUTY



# make my day

The complete range with a simple routine that leaves hair soft, manageable and shiny.



## make my day strawberry booster nourishing serum for fine or chemically-treated hair

A liquid serum with strawberry with regenerating and nourishing properties. The additional prickly pear active ingredient gives hair protection and nourishment. For professional use only. Use: mix with one sachet of milk\_shake make my day mask. Apply to clean, damp hair, applying over lengths and ends, process for 10 minutes and rinse well.



## make my day papaya booster hydrating serum for dry, coarse hair

A liquid serum with papaya with hydrating and illuminating properties. The additional prickly pear active ingredient gives hair protection and nourishment. For professional use only. Use: mix with one sachet of milk\_shake make my day mask. Apply to clean, damp hair, Applying over lengths and ends, process for 10 minutes and rinse well.



## make my day blueberry booster colour-protection serum for colour-treated or lightened hair

A liquid serum with blueberry with strengthening and colour protective properties. The additional prickly pear active ingredient gives hair protection and nourishment. For professional use only. Use: mix with one sachet of milk\_shake make my day mask. Apply to clean, damp hair, applying over lengths and ends, process for 10 minutes and rinse well.



# make my day

The complete range with a simple routine that leaves hair soft, manageable and shiny.

**milk  
shake®**  
NATURAL BEAUTY



## make my day shampoo milk shampoo for super soft hair

A beauty blend of milk proteins and strawberry, goji berry and raspberry extracts with a gorgeous fragrance that leaves hair soft and shiny. Its creamy texture makes this delicate shampoo perfect for all hair types without removing the hair's protective film.

Use: Distribute evenly over damp hair, later and rinse.



## make my day conditioner milk conditioner for super soft hair

A creamy milk texture with a gorgeous fragrance that helps to detangle and smooth hair without weighing the hair down. Milk proteins nourish the hair deeply. strawberry, goji berry and raspberry extracts have a revitalising effect, leaving hair strong and shiny.

Use: distribute evenly over clean, damp hair, leave in for a few minutes, then rinse.



## make my day mask intensive nourishing milk mask for super soft hair

Ideal for all hair types, it restores the hair's softness and shine. The intensive action of milk proteins nourishes the hair, making it strong and elastic. When mixed with the milk\_shake make my day booster, it strengthens their specific action on the hair. For professional use only. Use: mix with one sachet of milk\_shake make my day mask booster according to hair needs. Apply to clean, damp hair, applying over lengths and ends, process for 10 minutes and rinse well.





# leave-in treatments

Versatile products that are easy to use, to give hydration and make hair manageable.

**milk  
shake®**  
NATURAL BEAUTY



whipped cream

**no rinse conditioning & protective creamy foam for all hair types**

Formulated to condition hair, maintaining its moisture balance. Milk proteins condition and restructure the hair, whilst specific emollient ingredients give long-lasting hydration and the exclusive ingredient Integrity 4I protects hair colour. Use: **shake well, hold upside down and dispense. Apply to clean, damp hair, then style**



leave-in conditioner

**leave-in conditioner for all hair types**

Conditioning spray for normal or dry hair, it gives manageability to damaged hair, protecting the hair shaft and enhancing the moisture balance of the hair. Milk proteins supplement and strengthen the hair shaft while fruit extracts and honey revitalize hair, making it glossy and more manageable. The exclusive ingredient Integrity 4I protects hair from UV rays, improving colour stability. Use: spray evenly onto clean, damp hair, concentrating on more damaged areas. Style as desired.



incredible milk

**12 effects / leave in for all hair types**

Intensive spray mask for all hair types with muru mure butter, fruit extracts ( and milk proteins, it restores the hair's softness and shine. The intensive action of milk proteins nourishes the hair, making it strong and elastic. When mixed with the milk\_shake make my day booster, it strengthens their specific action on the hair. For professional use only. **Use:** mix with one sachet of milk\_shake make my day mask booster according to hair needs. Apply to clean, damp hair, applying over lengths and ends, process for 10 minutes and rinse well.



# colour care

Protective treatments for colour-treated hair. The products improve hair colour stability and keep colour looking fresh for longer.



colour maintainer shampoo  
**hydrating and protective shampoo for colour-treated hair**

Gentle shampoo that hydrates and protects colour-treated hair. Contains milk proteins that restructure the hair deeply and the exclusive ingredient Integrity 4I to improve colour stability. Paraben & sls free. Use: apply to wet hair, lather and then rinse.



colour maintainer shampoo  
**hydrating and protective shampoo for colour-treated hair**

SULFATE FREE  
FORMULA

Gentle shampoo that hydrates and protects colour-treated hair. Contains milk proteins that restructure the hair deeply and the exclusive ingredient Integrity 4I to improve colour stability. Paraben & sls free. Use: apply to wet hair, lather and then rinse.



colour maintainer conditioner  
**conditioner for colour-treated hair**

ORIGINAL  
FORMULA

Formulated to hydrate and protect colour treated hair. Milk proteins help to condition and restructure hair while the exclusive ingredient Integrity 4I improves colour stability, leaving the hair soft and shiny. Paraben free. Use: apply to clean, damp hair. Leave in for 2 to 5 minutes. Comb through, then rinse thoroughly.



deep conditioning mask  
**intensive maintenance conditioner for colour-treated hair**

A formula created to improve long-lasting colour stability with a concentrate of specific active ingredients. It detangles and protects hair, enhancing that hair's shine, softness and vitality. Paraben free. Use: apply to clean, damp hair, leave in for a few minutes, comb through and rinse.





# flower power

Protective treatments for colour-treated hair, with vegan-friendly formulas and high performing plant-based ingredients.

**milk  
shake**  
NATURAL BEAUTY



## colour maintainer shampoo / flower fragrance **hydrating and protective shampoo for colour-treated hair**

Gentle shampoo that hydrates and protects colour-treated hair. It contains moringa extract and soy protein with nourishing and protective properties. The exclusive ingredient Integrity 4I improves colour stability. Paraben free. Use: apply to wet hair, lather and then rinse.



## colour maintainer conditioner / flower fragrance **conditioner for colour-treated hair**

Formulated to hydrate and protect colour-treated hair. It contains moringa extract and soy protein with nourishing and protective properties. The exclusive ingredient Integrity 4I improves colour and stability. Paraben free. Use: apply to clean, damp hair. Leave in for 2 to 5 minutes. Comb through, then rinse thoroughly.



## leave-in conditioner / flower fragrance **leave-in conditioner for all hair types**

Spray conditioner for normal or dry hair, it gives manageability to damaged hair, protecting the hair shaft and enhancing the moisture balance of the hair, leaving it shiny, soft and with a gorgeous fragrance. It contains moringa extract and soy protein with nourishing and protective properties. The exclusive ingredient Integrity 4I improves colour stability. Paraben free. Use: Spray evenly onto clean, damp hair, concentrating on more damaged areas. Style as desired.



## incredible milk / flower fragrance **12 effects / leave in for all hair types**

Intensive spray mask for all hair types with moringa extract and soy protein with nourishing and protective properties. 1. Repairs all hair types. 2. Controls frizz. 3. Prevents split ends. 4. Protects from heat. 5. Improves hold. 6. Exceptional detangling. 7. Extreme shine. 8. Gives hair body. 9. Improves the effects of straighteners and/or curling wands. 10. Protects and maintains colour. 11. Protects against UV rays. 12. Smoothens the cuticle. Use: Spray onto damp or dry hair. Distribute and then style as desired.





# moisture plus

Maximum hydration that makes hair feel fuller, more resistant and shiny, day after day.

**milk  
shake**<sup>®</sup>  
NATURAL BEAUTY



## moisture plus shampoo **moisturizing shampoo for dry hair**

A delicate shampoo that gives softness and manageability to dry hair, maintaining the hair's optimal moisture balance. It contains organic papaya extract, Integrity 4I and hyaluronic acid with a plumping action, as well as protecting hair colour. Paraben and SLES free. Use: distribute evenly over damp hair, lather, then rinse. Repeat if necessary. Proceed with milk\_shake moisture plus conditioner.



## moisture plus conditioner **moisturizing conditioner for dry hair**

Gives softness and manageability to dry hair, maintaining the hair's optimal moisture balance. It contains organic papaya extract, Integrity 4I and hyaluronic acid with a plumping action, as well as protecting hair colour. Paraben free. Use: distribute evenly over clean, damp hair, leave in for a few minutes and rinse.



# integrity

Restores the hair's natural component, for restructured and strengthened hair.

**milk  
shake®**  
NATURAL BEAUTY



nourishing shampoo

## **nourishing shampoo for all types**

It's formula with organic muru muru butter cleanses gently, nourishing and conditioning the hair instantly, removing frizz, leaving hair soft and radiant. Sulfate & paraben free. Use: apply evenly to wet hair, lather, then rinse. Repeat if necessary.



nourishing conditioner

## **deep nourishing conditioner**

Specifically formulated to condition and nourish all hair types. With organic muru muru butter to condition and nourish the hair. Paraben free. Use: apply evenly to clean, damp hair. Comb through and leave in for 2-3 minutes. Rinse well



intensive treatment

## **deep nourishing treatment for all hair types**

A specific formula with organic muru muru butter for all hair types that nourishes deeply and removes frizz, leaving hair conditioned, manageable and extremely soft and radiant. Paraben free. Use: distribute over clean, damp, hair, massage through. Leave in for 3-5 minutes, comb through, then rinse.





# silver shine

A professional range formulated to neutralise unwanted brassy, yellow and golden tones in blond, bleached or grey hair.

**milk  
shake®**  
NATURAL BEAUTY



## silver shine shampoo

### specific shampoo for blond or grey hair

A delicate cleanser, it contains a specific violet capable of counteracting yellow tones in natural or lightened blond hair, or grey or white hair. Enriched with organic mixed berry extracts and milk proteins for shiny, soft and healthy hair. Sles free. Use: distribute evenly over damp hair, lather and rinse. Repeat if necessary. For more intense results, leave in for a few minutes



## silver shine conditioner

### specific conditioner for blond or grey hair

Formulated with a specific pigment that neutralizes unwanted yellow, golden or brassy tones that are common in white, grey, blond or lightened hair. Leaves hair conditioned, soft and full of vitality. Contains milk proteins, organic fruit extracts and Integrity 4I to condition to hair whilst maintaining the hair's moisture balance and protecting hair colour. Paraben free. Use: apply after cleansing to clean, damp hair, leave in for a few minutes, then rinse.



## silver shine whipped cream

### creamy conditioning foam for blond or grey hair

Formulated with milk proteins, organic mixed berry extracts and Integrity 4I to condition the hair whilst maintaining its moisture balance and preserving hair colour, enriched with a special violet pigment that neutralizes yellow and golden tones common in white, grey, blond or lightened hair. Gives manageability and leaves hair shiny, soft and healthy. Use: shake well, point downwards and dispense product. Apply to clean, damp hair. Style as usual.



## silver shine toning spray

### specific toner for blond or grey hair

A leave-in spray with a specific violet pigment that neutralizes unwanted brassy, yellow/golden tones in hair. It strengthens and hydrates hair, giving it a healthy appearance as well as detangling and improving manageability.





# icy blond

A range developed to counteract unwanted yellow, orange and brassy tones in blond hair, giving hair cool, ash tones.

**milk  
shake**  
NATURAL BEAUTY



## icy blond shampoo

### specific shampoo for blond hair

Cleanses hair gently with a specific black pigment that counteracts yellow or orange tones in blond or lightened hair, giving ash tones. Use: apply evenly over damp hair, leave in for a few minutes, then rinse. For a more intense result, leave in for a few minutes more. The milk\_shake icy blond products contain pigments which can give a very intense result on porous hair, once the desired result has been reached, alternate with different shampoo to maintain the results. Proceed with icy blond conditioner.



## icy blond conditioner

### specific conditioner for blond hair

Formulated with a specific black pigment, it gives hair softness whilst counteracting yellow or orange tones in blond or lightened hair, giving ash tones. Milk proteins restructure the hair deeply, giving hair a healthy, vibrant appearance. Use: after cleansing, apply evenly over damp hair, leave in for a few minutes, then rinse. For more intense result, leave in for a few minutes more. The milk\_shake icy blond products contain pigments which can give a very intense result, especially on porous hair, once the desired result has been reached, alternate with a different conditioner to maintain the results.



# curl passion

The specific range to reveal the natural beauty of curly hair.

**milk  
shake®**  
NATURAL BEAUTY



curl passion shampoo

## shampoo for curly hair

Cleanses and conditions all hair types gently and deeply, giving softness and manageability. Helps to make curls bouncy, flexible and long-lasting. Contains organic pracaxi and babassu oils, milk proteins, fruit extracts, Integrity 4I and quinoa proteins. Paraben & sulphate free. Use: distribute evenly over damp hair, lather, then rinse. Repeat if necessary. Proceed with milk\_shake curl passion conditioner.



curl passion conditioner

## conditioner for curly hair

Ideal for all hair types to give softness and manageability without weighing the hair down. Helps to make curls bouncy, flexible and long-lasting. Contains organic pracaxi and babassu oils, milk proteins, fruit extracts, Integrity 4I and quinoa proteins. Paraben free. Use: distribute evenly over clean, damp hair, leave in for a few minutes, then rinse. Proceed with milk\_shake curl passion leave-in.



curl passion leave-in

## leave in spray for curly hair

A treatment spray, ideal to give softness and manageability to curly hair. Helps to make curls bouncy, flexible and long-lasting. Contains organic pracaxi and babassu oils, milk proteins, fruit extracts, Integrity 4I and quinoa proteins. Paraben free. Use: distribute evenly over clean, damp hair and proceed with styling.





# volume solution

Unprecedented volume and texture from the very first application.

**milk  
shake®**  
NATURAL BEAUTY



volumizing shampoo

## **volumizing shampoo for all hair types**

A shampoo developed to give volume and body without weighing the hair down. Cleanses gently with its specific formula containing precious sugar derivatives that transform the hair, giving it body. Paraben & sles free. Use: distribute evenly over damp hair, lather, then rinse. Repeat if necessary. Proceed with milk\_shake volumizing conditioner.



volumizing conditioner

## **volumizing conditioner for all hair types**

With a deep action, it gives softness and body without weighing the hair down. Containing precious sugar derivatives, it transforms and gives volume to all hair types, with a deep reviving action. Paraben free. Use: distribute evenly over clean, damp hair, leave for a few minutes and rinse.



volumizing styling spray

## **volumizing styling spray for all hair types**

Specifically formulated to give structure and shine to give hair a healthy appearance. Precious sugar derivatives give volume and support without weighing the hair down. It guarantees elasticity and weightlessness, for a long-lasting style. Use: spray onto roots and lengths and proceed with styling.





# lifestyling

A product range designed to create any look, from the most natural to the most elaborate.

**milk  
shake®**  
NATURAL BEAUTY



liquid styler

## styling and defining fluid

A versatile styling fluid, ideal to create definition and soft, flexible hold with a memory effect. Suitable for all hair types, to dry hair naturally, and for all hair types. Gives body, softness and shine. Use: dose the necessary quantity and apply to clean, damp hair. Proceed with styling. Can be used after drying to strengthen the created curls.



blow-dryer primer

## pre-styling lotion for hair

Ideal to give hair greater body and texture. Its specific dispenser transforms the product into a soft foam that is easy to distribute evenly over the hair. It protects from heat, reduces drying time, helps hairstyles last longer and prevents colour-fading.



thermo-protector

## heat protection for hair

An ultra-fine formula created to protect the hair fibre from the heat of blow-drying, straightening irons and curling wands. The formula should be sprayed at 20-30 cm from clean, damp hair, from root to tip, creating an invisible film over the hair that prevents split ends, breakage and damage, as well as reducing drying time.





Nouvelle<sup>®</sup>  
new generation





# PERMANENT HAIR COLOR

## Hair Colour | 100ML

The permanent hair color cream offers bright and natural shades while protecting hair structure. The range also offers 100% grey coverage with high impact shine. Enhanced with Megalift super lighteners, it achieves extra light and bright blonde tones, available in 12 stunning nuances. Enriched with rice proteins for protection and hydration, Achillea for shiny hair, mallow for soothing and calming effects, and vitamin C as a natural antioxidant, this product ensures vibrant, healthy hair with every use. Perfect for achieving professional salon-quality results.

### HOW TO USE

Base coloration: 1:1.5 dilution with oxygen

Super bleaching and super highlights: 1:2 dilution with oxygen

Bleaching boosters: mix with super bleaching nuances to increase bleaching up to ine level (es. 25g coloring cream + 25g 000 + 75g oxygen / dilution 1:1.5)





# PAINT BANG

## AVAILABLE COLOURS

Earth Ash | Violet  
Jupiter | Orange  
Make Make | Rose  
Mars | Red  
Mercury | Mahogany  
Moon | White  
Neptune | Violet  
Pink Planet | Pink  
Pluto | Blue  
Saturn Blue Jeans | Blue  
Sun | Yellow  
Uranus | Emerald  
Venus | Green



Nouvelle®

Ammonia-free, semi-permanent direct hair coloring, designed to create an eccentric and original look.



# COLOR EFFECTIVE BLONDE

## The ultimate care for blonde hair

A specialized range of haircare products meticulously designed to meet the unique needs of blonde hair, whether natural or color-treated. Our advanced formulations, crafted with expertise and passion, enhance the radiance, strength, and vitality of blonde tones. Infused with nourishing and protective ingredients, each product works to illuminate, hydrate, and maintain the perfect balance of cool or warm shades, preventing brassiness and dullness.

## A RANGE OF ANTI-YELLOW AND ANTI ORANGE TREATMENTS



### **Color Effective True Silver Shampoo** **250ML \ 1000L**

Shampoo for silver and white hair. Ideal for gently cleansing and reducing yellow reflections in natural white and grey hair or in super-lightened and/or bleached hair (tone depth 9/11).



### **Color Effective Yellow Killer Bleaching Powder 500g**

Toning bleaching powder  
Bleaching powder with an extraordinary anti-yellow toning effect. Thanks to its balanced formula, it can lighten up to 9 levels.



### **Color Effective Orange Killer Shampoo** **250ML \ 1000L**

This shampoo cleanses gently and neutralizes orange reflections on natural/dyed/lightened hair (tone depth 5/8), making colour natural and shining.



### **Color Effective Yellow Killer Shampoo** **250ML \ 1000L**

This specific shampoo to counteract yellow reflections due to dyes, lightening and bleaching, ideal for tone depth ranging between 7 and 9.



### **Color Effective Yellow Killer Mask** **250ML**

Nourishing mask enriched with pigments to be used after Yellow Killer shampoo to counteract yellow reflections due to dyes, lightening and bleaching, ideal for tone depth ranging between 7 and 9.



Nouvelle®



# COLOR EFFECTIVE BLONDE

## A RANGE OF ANTI-YELLOW AND ANTI ORANGE TREATMENTS



### **Color Effective Deco 9 500g**

Lift up to 9 levels extra-lightening capability bleaching powder, formulated to preserve hair wellness. User friendly. Ideal for any professional lifting technique.



### **Color Effective Decoflash Blue 500g**

Bleaching powder that combines a superior lifting capacity with easiness of use.



### **Color Effective Decocream 250ML**

Bleaching cream with high protective action. The product ensures beautiful lightenings and highlights even on sensitive hair, due to the precious oils combined with its bleaching ingredients. The product respects the hair structure in easy and safety way using the standard application.



### **Color Effective Freestyle Deco 500g**

Specific bleaching powder for free-hand techniques; with its compact texture, it does not drip and can be used without papers for mèches. It bleaches up to 6 tones.

## NATURAL ACTIVE INGREDIENTS

VITAMIN E

LINSEED  
OIL

HYDROLYZED  
QUINOA

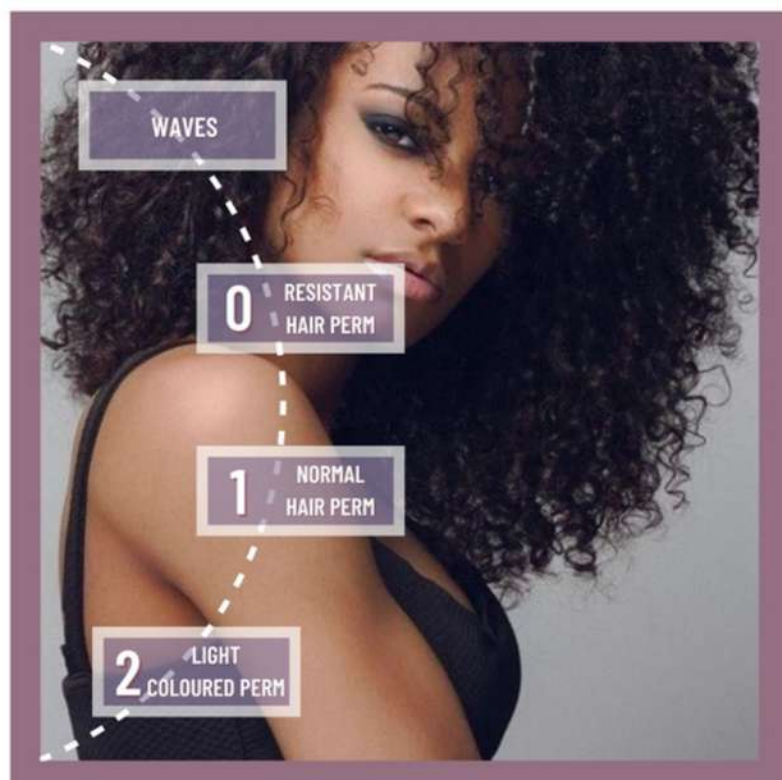


Nouvelle®

# SHAPE - NEW VOLUMES FOR HAIR

## SINOUS WAVES, SOFT RINGLETS, DEFINED CURLS

Thanks to the extreme delicacy, it can be used more frequently compared to traditional perms. It contains a plant derivate with moisturizing, emollient and soothing action, which helps to the hair fiber the cohesion and elasticity of natural hair.



### Nouvelle Perm Kits

120ML x 120ML

These are the many looks that can be created with Shape.

A crescendo of volume and movement, more support and a fluffy head of hair are the results of a permanent delicate treatment, with a natural effect, perfect for creating new styles or simply tame the more rebellious curls and wisps.

0: Has a superior curling capacity, is not aggressive and does not leave the hair frizzy. After the treatment, the hair is brilliant, soft and supple. Box includes 120ml Perm 120ml Neutraliser  
0 - Resistant Hair Perm

1: Has a superior curling capacity, is not aggressive and does not leave the hair frizzy. After the treatment, the hair is brilliant, soft and supple. Box includes 120ml Perm 120ml Neutraliser  
1 - Normal Hair Perm

2: Has a superior curling capacity, is not aggressive and does not leave the hair frizzy. After the treatment, the hair is brilliant, soft and supple. Box includes 120ml Perm 120ml Neutraliser  
2 - Light, Coloured Hair Perm



### Nouvelle Fixing Neutralizer

1L

Neutralizing Solution for Nouvelle Perm. Apply fixing after the development time of the perm to fix the waves.

Nouvelle®



# COLOR GLOW

## COLOUR GLOW RANGE

The Color Glow line was created to amplify the results of the salon coloration treatment and maintain a perfect, bright and shiny color for as long as possible. The product line is rich in natural active ingredients, leaving the hair nourished, vigorous & shiny.



### Color Glow Maintenance Shampoo 250ML / 1L

Intensive moisturizing shampoo for colored and treated hair. It seals the color in the hair, while maintaining the brilliance for longer. It removes all residues after coloration; it returns natural balance to the colored or treated hair and the skin.



### Color Glow Maintenance Mask 250ML / 1L

Acid pH mask for colour maintenance and protection. Deep moisturizing mask for coloured and treated hair. It moisturizes and returns bright and sheen to colored, damaged hair. It also give greater anti-age and anti-oxidizing protection.



### Color Glow Revi Oil 10 X 10ML

Instantly revitalizing rinse-out oil designed to deeply nourish and restore dry, sensitized hair. Perfect for chemically treated hair, heat styling, or environmental stressors, this luxurious oil infusion replenishes moisture, enhances softness, and boosts shine—leaving hair silky, strong, and full of life from the very first use.



### Color Glow Moisture Refill 150ML

Leave in treatment for all types of hair. This treatment is a no-rinse revitalizing detangling heat-protective treatment. All in one moisturising and sheen, and protection from sources of heat

## NATURAL ACTIVE INGREDIENTS

**VITAMIN E | LINSEED OIL | ALOE**

Nouvelle®

# DOUBLE EFFECT



## HAIR REPAIR & NOURISHING

Double effect is the line designed to keep hair healthy thanks to intense protection and prevention from damage caused by external factors. The products cure damaged, dry or brittle hair thanks to a powerful and nourishing action.

**100% PARABEN &  
ALLERGEN-FREE**



### Double Effect Nutri Shine 75ML

Nourishing and shining rich fluid for hair: this salon product for dry hair regenerates and rebuilds, providing instant brightness. Prevents and reduces split ends, enriching damaged hair tips.



### Double Effect Nutritive Shampoo 250ML / 1L

Repairing treatment shampoo. Its gentle action on scalp and hair delicately cleanses, sensitised and dry hair.



### Double Effect Nutritive Mask 250ML

Deep repairing treatment for coarse hair, restructuring and providing body and texture to weak and lackluster hair, damaged by aggressive chemical treatments and environmental stress factors. It regenerates and rehydrates hair without making it heavy.



### Double Effect True Argan Oil 100ML

True Argan Oil is a formula which is instantly absorbed by the hair, giving it brilliance, shine and silky finish without residues.

**Nouvelle**



# RE-STYLING

Sculpt, design, and color with limitless creativity. Nouvelle’s new RS line is a revolutionary collection designed for both salons and clients, offering an extensive range of styling and finishing products to bring any vision to life. Each formula is crafted for performance, ensuring exceptional hold, texture, and brilliance while allowing for effortless experimentation. Housed in eye-catching packaging that fuses vintage aesthetics with cutting-edge digital artistry, the RS line is more than just haircare—it’s an artistic statement, redefining style with innovation and flair.



**Re-Styling Volumaze**  
**10g**

Volumizing powder that instantly lifts and thickens limp, lifeless hair, adding long-lasting body, texture, and support for a fuller, more voluminous look.



**Re-Styling Extreme Gel**  
**200ML / 500ML**

Strong hold gel, ideal for sculpting and shaping trendy hair styles, creating well-defined looks that will stay perfect all day long.



**Re-Styling Curls Hi-Fi**  
**250ML**

Specific spray for curly hair. Gives support and definition for elastic, natural, full-bodied curls with no frizz.



**Re-Styling Curl Relaxer**  
**250ML**

Cream with a strong straightening effect, it also conditions. Ideal for smooth hair styles. Eliminates frizz, protects from hair-dryer heat and from humidity.



**Re-Styling Double Shot**  
**250ML**

Two-phase leave-in treatment. Thanks to its double action, instantly moisturizes, nourishes and restructures dry brittle hair, while providing shine. To be used on damp or dry hair. Ideal for sensitised hair.



# RE-STYLING



## Re-Styling Matte Mud 100ML

Molding paste with matte effect. Gives hair definition and movement with a high hold. Work the product with your hands and apply to damp or dry hair. Shape to create your desired style.



## Re-Styling Glam Gloss 200ML

Light glossing spray with an antistatic effect for thin hair, providing shine with maximum gloss.



## Re-Styling Heat Protector 100ML

Heat protection glossing fluid. Reinforces brittle hair and protects from the heat of hair dryer and plate.



## Re-Styling Rock Hard 500ML

Extra strong hold hairspray. Long-lasting hair style fixing, does not dull, and can be easily brushed away.



## Re-Styling Extra Trend 500ML

Spider web effect modeling paste to create structured or matted looks following one's own fashion. High fixing and duration.



## Re-Styling Shiny Hair 250ML

Glossing protection spray. Makes hair shine without making it heavy, leaving it brilliant, soft and silky, providing protection against external agents.



## Re-Styling Spider Head 100ML

Molding paste with thread-like texture. Gives hair an unlimited structure for an uncombed look.



## Re-Styling Shine Wax 125ML

Modelling, fixing and shining wax, ideal to shape and sculpt locks of hair and create a wet effect look. It is not greasy and keeps hair moist.



**Silky**<sup>®</sup>  
TECHNOBASIC



THE **HAIR**  
**BEAUTY**  
EXPERIENCE

AN ESSENTIAL BRAND WITH SPECIFIC PRODUCTS DESIGNED FOR THE CUSTOMER'S MAIN NEEDS. STRICTNESS, CLEAN SHAPES, FORMULAS THAT "GO STRAIGHT TO THE POINT"



## ESSENTIAL & PERFORMING

It is an essential, pure, slim brand. It goes straight to the point to respond specifically to the needs and wishes of modern customers: colour, care, finishing, silky offers everything necessary for a healthy, always up-to-date look. The silky woman is contemporary, pragmatic, not influenced by passing fashions, yet is nevertheless interested in all that is elegant, natural and not excessively artificial. A brand conceived and produced in Italy and present in more than 80 countries around the world.

## ESSENTIAL & SPECIFIC

Product systems are part of a slim, lightweight, and easy-to-use structure for both the hairdresser and the end consumer. Each product is designed to meet specific hair and scalp needs. From color to finishing to hair nutrition, the line is essential and specific without dispersion between often unnecessary accessory products.



**Silky**



# COLOR & TECHNICAL

---



Silky

# COLORATION CREAM

## Hair Colour | 100ML (TSIN)

Coloring cosmetic cream allowing to change the natural color of hair by depositing latest generation color pigments inside the hair structure, with the highest purity degree (99%). Its specific formulation combines pure dyes and a blend of very selected cosmetic substances (90%) with nourishing, softening and anti-static properties that invigorate damaged hair, giving it body and shine. It guarantees long lasting color and shade stability. It respect the hair structure; has conditioning properties and covers grey hair. Bleaching power of natural colors: 3 levels with base coloration; 4 levels with super bleaching; 5 levels with super bleaching + 000.

### HOW TO USE

Base coloration: 1:1.5 dilution with oxygen

Super bleaching and super highlights: 1:2 dilution with oxygen

Bleaching boosters: mix with super bleaching nuances to increase bleaching up to ine level (es. 25g coloring cream + 25g 000 + 75g oxygen / dilution 1:1.5)



Silky



# DRESSING COLOR

## Hair Colour | 100ML (TDR)

Ammonia, paraben and PPD free coloration with protective ingredients for a perfect result. It leaves the hair brilliant, soft and healthy and respects the hair structure. Ideal for the most sensitive skin: it does not irritate the scalp.

### HOW TO USE

Choose the developing emulsion according to the lift you want to achieve:

10 vol. (3%): tone on tone or darker

20 vol. (6%): 1-2 levels lighter

30 vol. (9%): 2-3 levels lighter

40 vol. (12%): more than 3-4 levels lighter

Addition 000: more than 4 levels lighter

Mix with the emulsion with mixing ratio 1:1.5, or 1:2 with toners.

Leave on from 30 to 55 minutes depending on the desired level of lifts.



**44 Shades for an extraordinary natural colour**

**PPD FREE  
PARABEN FREE  
AMMONIA FREE**

**Silky**

# LIQUID TONER

## Demi-Permanent Hair Colour

### Why and hair toner is so important?

An hair toner is a demi-permanent hair color altering the state of the hair's color and used to cool down or warm up an existing shade. Toners are demi permanent and are available in clear or colored form; they are extremely gentle as they are not interfering with the base color and they can be applied in between color treatments, not just right after one, so that a color lasts and looks fresh longer.

### THE EASIEST WAY TO PERSONALIZE HAIR WITH A MULTI-PURPOSE PRODUCT

- 1. Toner: refresh colors, allows to play with different tones without doing a permanent hair dye, following the latest trends. It's the perfect final touch
- 2. Color correction: corrects unwanted colors and neutralizes unwanted tones, like red in blond hair or wrong blue or green tones.
- 3. After bleaching: the perfect immediate way to remove the unpleasant yellow tone
- 4. Shine effect: gives an evident immediate light to hair
- 5. Base breaker: in case of meches on the lengths, the roots of the hair can be retouched to maintain a general uniform result for a longer time
- 6. Permanent color refresher: during the retouching of the roots with permanent color, the liquid shades can refresh and give new shine to the lengths hair color

### APPLICATION TIPS

GOAL	MIXTURE	SETTING TIME	RESULT
TONER	1+1.5	15/20 MIN	To obtain maximum concentration and fullest color in the desired shade.
COLOR CORRECTOR	1+1.5	10/20 MIN	To correct unwanted color tones.
AFTER BLEACHING	1+2	10/15MIN	To combat yellow bleaching reflections and obtain the desired color effect.
EXTRA SHINE EFFECT	1+2	10/20MIN	The purity of CLEAR makes it possible to obtain the hair's desired color effect irrespective of the base tone.
MODULATOR TONERS	1+1.5	10/20MIN	To obtain pastel shades by adding CLEAR to any liquid toner shade.
PERMANENT COLOR REFRESHER	1+2	15/20MIN	Maintains and restores life and color to lengths of previously dyed hair with the greatest possible shine.
BASE BREAKER	1+1.5	10/20MIN	Ideal for regrowth after streaking, bringing back a natural and pleasing effect

TONER INITIATOR:  
specific activator for  
liquid toner.



(OXISLI5)

CLEAR. TONER can be  
used as gloss or  
mixed with other  
shades to tone down  
the color intensity.



(TSCLE)

FAST. TONER revives,  
corrects and tones  
the color.



(TSFA)

Silky



# COLOR RELOAD

250ML  
(SIRELO)

Direct colouring without ammonia to revive your colour between salon treatments and hide any re-growth. Brings life back to highlights in coloured hair and intensifies the natural colour, as well as reinvigorating and moisturising the hair. The result is very natural: vibrant hues and shiny hair for a soft and glossy effect. Lasts up to 10 washes.

HOW TO USE

Color Reload is ready for use: after shampooing, apply directly on to wet or dry hair and leave on for 10 to 30 minutes depending on the desired results. Then emulsify with warm water and rinse thoroughly.

AVAILABLE COLOURS

- Autumn | Rich & vibrant red hue
- Chilly Orange | Warm & deep copper hues
- River Pearl | Light cold shades for silver shades
- Neutral | Subtle plays of light to illuminate the hair
- Coffee | Cold & deep brown shades
- Cinnamon | To revitalize warm brown hues
- Champagne | Delicate highlights in beige hues
- Mocaccino | Bright touch in golden hues



DIRECT COLOUR

Silky

# REMEDY & CARE

## WELLNESS WITH NATURE & SCIENCE

Remedy & Care is an exclusive natural treatment range, to counter the most common disorders of hair & scalp. The synergic combination of nature & science gives birth to three different specific formulations, made of natural active ingredients' blend, giving targeted products for hair loss & scalp sebum excess.

### .05 HAIR LOSS PREVENTION TREATMENT

HL Complex Natural Actives



**.05 Silky Trivix Shampoo 250ML / 1L  
(TRISHAP / TRISHA)**

Hairloss prevention shampoo with gentle cleansing formulation prevents hair loss.



**.05 Silky Trivix Treatment Vials 10ML X 10  
(TRIFI)**

Aiding treatment against hairloss. Intensive treatment that improves the normal hair growth, thanks to its natural actives' reinforcing and restructuring actions. Particularly suitable during change of season.

### .06 DANDRUFF PREVENTION TREATMENT

DAF Complex Natural Actives



**.06 Silky X-Trim Shampoo 250ML  
(XTRISHAP)**

It contrasts the cause of dandruff and helps to restore scalp balance. With micro-granules for a scrub effect, to smooth the scalp and eliminate impurities.

### .07 GREASY SCALP TREATMENT

OH Complex Natural Actives



**.07 Silky Sebo Therapy Shampoo 250ML / 1L  
(SESHAP)**

Sebum regulating shampoo, that helps to normalize the sebum excess of the scalp, encouraging its natural balance.



**.07 Silky Sebo Therapy Treatment Vials 10ML X 10  
(SEFIA)**

Soothing, normalizing lotion that reduces sebum secretion, assuring scalp cleanliness & giving lightness to hair.

Silky



# HAIR RECONSTRUCTION

---



Silky

# HAIR RECONSTRUCTION

## HEALTHIER HAIR & EMBRACING SENSORIALITY

Silky hair reconstruction works precisely on controlling and maintaining the right porosity, using an innovative technology that governs the ph of the hair and nourishes it externally and internally for both immediate and long-term reconstruction. The silky reconstruction system is based on the highest performing natural ingredients, combined with powerful and exclusive clean cosmetic technology and an incredible sensory experience.

## THE PERFECT 5 STEP HAIR ROUTINE



### Silky Rebuild Butter 500ML (SIREREBU)

Butter designed to nourish damaged hair in depth. It takes advantage of the dilation of the cuticles to penetrate inside and nourish damaged hair in depth.



### Silky Rebuild Shampoo 500ML (SIRERESHA5)

Shampoo with cleaning and nourishing action. Frequent wash shampoo. Its gentle action makes it the ideal daily shampoo.



### Silky Rebuild Lotion 200ML (SIRERELO)

It fixes the nourishing and restructuring substances. It fixes the nourishing and restructuring substances of previous treatments in the hair, giving extreme softness and combability.



### Silky Rebuild Mask 500ML (SIREREMA5)

Moisturizes the hair and seals the cuticles. Moisturizes the hair and seals the cuticles to retain nutrients inside the hair.



### Silky Rebuild Fluid 125ML (SIREREFLU)

Protects and nourishes hair before and after drying. It takes advantage of the dilation of the cuticles to penetrate inside and nourish damaged hair in depth.



Silky



MORFOSE™  
**OSSION**  
PROFESSIONAL SYSTEMS



PREMIUM  
**BARBER**  
LINE



# MORFOSE OSSION

PROFESSIONAL SYSTEMS

## PROFESSIONAL BARBER RANGE

It is the line aimed at male hair and beard care from the MORFOSE company.  
The brand has products that are aimed at the retail customer and professional barbers.  
Products for use and maintenance in barbershops.

### Hair Gel Wax Medium Hold 150ml



Youth scent. Gum fragrance for those who wish to preserve a fresh smell and blend it with a shiny effect in any style, as well as an intermediate hold that is ideal for long hair.

Provides a Medium hold with a natural finish. Leaves a Gum fragrance on the hair.

### Hair Gel Wax Mega Hold 150ml



It is extra strong. Helps thicken, texture and increases the fullness to the hair. Provides a strong, pliable Mega hold with a hard finish. Works extremely well in shorter hairs or for short curly hairs. Washes out easily and is made of a water soluble base for a perfectly incredible shine. Leaves a nice fragrance on the hair.

### Hair Matte Wax Hold 150ml



It helps thicken, texture and increases the fullness of the hair. It provides a strong, pliable matte hold with a hard finish. Works extremely well in shorter hairs or for short curly hairs. Washes out easily and is made of a water soluble base for a perfectly incredible shine. Leaves a nice fragrance on the hair.

### Hair Gel Wax Ultra Hold 150ml



It helps thicken, texture and increases the fullness of the hair. Provides a strong, pliable Ultra hold with a hard finish. Works extremely well in shorter hairs or for short curly hairs. Washes out easily and is made of a water soluble base for a perfectly incredible shine.

### Hair and Beard Cream Wax 175ml



Formulated by a hard holding enabling you to give your hair any shape you like without leaving residuals. Making the hair gain a matte look enables reshaping during the day time.

Both your hair and beard preserves the shape you have given all day long.



# MORFOSE OSSION

PROFESSIONAL SYSTEMS

## PROFESSIONAL BARBER RANGE

It is the line aimed at male hair and beard care from the MORFOSE company. The brand has products that are aimed at the retail customer and professional barbers. Products for use and maintenance in barbershops.

### Beard Serum 50ml



Provides a conditioned healthy looking beard and puts an end to flaky, itchy skin beneath. The serum also gives an shiny finish and is paraben free.

### Beard Care Oil 20ml



Beard Care Oil is an effective product including the highest quality blend of herbal oils that provides a healthy and nourished appearance. Apply directly to the beard from the bottom

### Spray Cologne Wave 300ml



Perfect for use at Barbershops for that extra finishing touch! Due to the high perfume content, this hairdressing product lasts for a very long time. The high alcohol disinfects and soothes your skin after a wet shave.

Thanks to the ingredients it can also be used as a beard perfume or as a body spray.

### Spray Cologne Storm 300ml



Perfect for use at Barbershops for that extra finishing touch! Due to the high perfume content, this hairdressing product lasts for a very long time. The high alcohol disinfects and soothes your skin after a wet shave.

Thanks to the ingredients it can also be used as a beard perfume or as a body spray.

### Clipper Cleansing Oil 5-in-1 300ml



Clean your professional hair clippers to ensure a hygienic service without damaging your clippers.

# MORFOSE OSSION

PROFESSIONAL SYSTEMS

## PROFESSIONAL BARBER RANGE

It is the line aimed at male hair and beard care from the MORFOSE company. The brand has products that are aimed at the retail customer and professional barbers. Products for use and maintenance in barbershops.

### Barber Shampoo 5L



The rich, luscious lather effortlessly purifies hair, removing impurities and rejuvenating the scalp. Enriched with nourishing ingredients, this formula goes beyond basic hygiene, leaving hair impeccably soft, manageable, and radiantly healthy.

### Hair Spray Extra Strong Hold 400ml



Protects your hair style under any season and air condition thanks to its specially designed strong formula for men. Gives shine and vigor to your hair thanks to its unique content.

### Hair Styling Powder 20g



These powders will allow you to add body and texture to fine hair and volume to hairstyles, achieving maximum lift immediately. Matte finish, apply to dry hair, move the hair and give the desired shape.

### Hair Care Massage Tonic 250ml



Due to its enriched provitamin contents, Ossion Hair Tonic gives health and vigor to your hair. Helps fortify skin tissue and coat cuticles for an altogether better head. On the other hand, its menthol content makes you feel fresher and relaxed while the essential oils and extracts softens your hair with their silky touch. Furthermore, citric acid sweeps away lifeless skin cells so hair can grow unobstructed.

### Shaving Gel 700ml



3 in 1. Made with glycerin base. Slide the razor with ease without the need to use a steamer. Thanks to its ingredients it prevents irritation, redness of the skin and provides a comfortable shave even if the beard is abundant. Designed for sensitive skin and smoothes the beard.





P R O F E S S I O N A L

# CLIPPERS & TRIMMERS

HEAD OFFICE: 021 981 0032 | E-MAIL: [orders@rapple.co.za](mailto:orders@rapple.co.za) | [WWW.RAPPLE.CO.ZA](http://WWW.RAPPLE.CO.ZA)

# STUDENT PLUS KIT

Professional mains operated Detailer Trimmer, with a professional rotary motor specifically designed for edge lining & detail work. T- Shaped Blades adjust to zero overlap. Lightweight and less than 13cm in length.

## FEATURES

- Cord powered for more cutting power.
- The Detailer Trimmer is designed for ultra-close detail work and is ideal for tattoo and boxing work.
- Powerful heavy-duty corded trimmer, ideal for continual use.
- Professional rotary motor for durability and longevity.
- High-precision extra wide WAHL® T-BLADE Adjusts to "0" overlap.
- Extra wide T blade which is 6mm wider than the standard Detailer.
- Motor Rotary motor, 5,000 rpm
- Power corded
- Blades T-Blade
- Cutting Length 0.4mm
- Cutting Width 38mm





# CORDLESS SUPER TAPER

ProLithium Series (Lithium technology – 2x Longer life)

The corded Super Taper clipper has become iconic amongst barbers and hairdressers. The powerful V5000 motor has been engineered to produce greater strength to the cutting ability of the clipper while running cooler, meaning that it can cope with the demands of a busy barber shop and consistently cut well all day.

## SPECIFICATIONS

- Type: Professional Cordless Clipper
- Run time: 90 min (continuous operation on mains)
- Charge Time: 120min
- Motor: Rotary Motor – 5500 rpm
- Blades: Chrome Plated – Screw Fix
- Cutting Length: 1 – 3.5mm
- Cutting Width: 40mm
- Products Weight: 290g
- Cable length: 2.4m (plug-in transformer)
- Includes: 4 guide combs (3 – 13mm), blade oil, cleaning brush, a transformer, blade guard & flat-top hairstyling comb



# BELLA KIT

## PROFESSIONAL RECHARGEABLE TRIMMER

Up to 100 min continuous cordless cutting when fully charged  
 Rust resistant, high-precision, quick-detach chrome-plated blades  
 Compact, ergonomic design for comfort and control  
 Includes automatic recharging stand with LED indicator.

## SPECIFICATIONS

- Battery Charging Time: 16 h
- Battery Operating Time: up to 100 min.
- Blade: Quick-Change System STAR BLADE
- Cable Length: 2 m (plug-in transformer)
- Cutting Length: 0.4 mm
- Cutting Width: 30 mm
- Drive: DC motor with sound proofing, ~ 5,750 rpm
- Kit includes: trimmer, charging transformer, charging stand, various attachment comb [3-6 mm], oil, cleaning brush, instructions
- Mains Voltage: 220-240V~50-60Hz
- Weight: 130 g





# DETAILER

A 6mm wider professional mains operated Detailer Trimmer, with a professional rotary motor specifically designed for edge lining & detail work. T- Shaped Blades adjust to zero overlap. Lightweight and less than 13cm in length.

## FEATURES

- Cord powered for more cutting power
- The Detailer Trimmer is designed for ultra-close detail work and is ideal for tattoo and boxing work
- Powerful heavy-duty corded trimmer, ideal for continual use
- Professional rotary motor for durability and longevity
- High-precision extra wide WAHL® T-BLADE Adjusts to "0" overlap.
- Extra wide T blade which is 6mm wider than the standard Detailer
- Motor Rotary motor - 5,000 rpm
- Power corded
- Blades T-Blade
- Cutting Length 0.4mm
- Cutting Width 38mm



# CORDLESS DETAILER LI

It has FINALLY arrived! The popular WAHL Detailer trimmer is now available in a wireless version: the Cordless Detailer Li Trimmer!

Just like its beloved predecessor, the WAHL Cordless Detailer Li Trimmer is a powerful trimmer from the Five Star Series. Thanks to the very powerful lithium-ion battery, the new Cordless Detailer is even stronger than the classic version and shaves with a very high speed of up to 6,800 rpm. That is 1,800 rotations per minute faster!

With a very short shaving length of 0.4 mm and a wide T-Wide cutting blade, made for contouring and finishing, the Cordless Detailer Li is ideal for the barber and hairdresser who likes to refine his work.

Please note, the Detailer trimmer is less suitable for customers with flexible skin, such as older people and children due to the sharp cutting blade. So be extra careful.

Thanks to the powerful lithium ion battery, with a working time of 100 minutes, the Cordless Detailer Li works effortlessly in busy salons.

- Lithium-ion
- 100 Minutes operating time
- 60 Minutes charging time
- T-Wide cutting blade
- Close-cut for contouring and finishing

The WAHL Cordless Detailer Li Trimmer comes with:

- 3x attachment combs (1.5, 3 and 4.5mm)
- 1x Charger
- 1x Charging standard
- 1x Maintenance brush
- 1x tube of oil
- 1x Protective cutting blad





# BELLINA ARTIST SERIES

## PROFESSIONAL CORDLESS CLIPPER

- POWERFUL
- DURABLE
- LONG LASTING
- V5000 PRO CLIPPER MOTOR

Up to 100 min continuous cordless cutting when fully charged  
 Rust resistant, high-precision, quick-detach chrome-plated blades  
 Compact, ergonomic design for comfort and control  
 Includes automatic recharging stand with LED indicator.

## FEATURES

- Designed for the busy stylist or barber
- 45 min charge
- 90 min run time
- Designed for all clipper work
- Smart Clipper
- Rustproof, high-precision, chrome-plated blades

## SPECIFICATIONS

- Drive: Oscillating/ Vibrating armature ~6,000 RPM
- Mains Voltage: 230V~50Hz



# MAGIC CLIPPER

## 5 Star Series

The 5-Star Cordless Magic Clip is designed to deliver the sharp performance that experts demand with the freedom of a cordless clipper. The magic is in the blades! The Cordless Magic Clip features a high precision stagger-tooth 2161 blade with crunch technology. This cordless tool offers superior speed and ease of use, a convenient taper lever for easy fading and blending, and a lithium ion battery for a 90+ minute run time per charge. It also has a cord/cordless cutting capability.

### INCLUDES

- 8 Combs (1/2-8 Sizes)
- Clipper comb
- Charging set
- Maintenance set
- Red blade guard





# SENIOR CLIPPER

Wahl's oldest and most established clipper. The Wahl Senior clipper is powered by their most powerful v9000 electromagnetic motor that runs cooler and faster than standard clippers and is designed for a busy day in the shop.

This heavy duty clipper comes with a metal bottom housing for a sturdy, durable grip. Excellent for tapering, blending, and fading.

## FEATURES

- 2.4m professional-grade, chemical-resistant cord

## INCLUDES

- 3 Attachment combs
- Oil
- Cleaning brush
- Instructions
- Red blade guard



# LEGEND CLIPPER

The 5 Star Legend Clipper is a unique, essential tool for the busy barber. The Legend is designed for soft line fading and seamless blending. This tool allows for a longer blend range with the extended blade lever.

The innovative deep-tooth wedge blade helps create a smooth blunt cut like you've never experienced before! Don't settle for ordinary, become a LEGEND!

## FEATURES

- Soft line fading and seamless blending
- Allows for longer blend range with extended blade lever
- Innovative Wedge blade creates a smooth blunt cut
- Bulk removal

## INCLUDES

- 8 premium attachment combs
- Industrious 4M cord
- Clipper comb
- Maintenance set





# BALDING CLIPPER

The 5 Star Balding Clipper is a barbershop must-have. With a powerful electromagnetic motor that cuts twice the speed of pivot motors, the 5 Star Balding Clipper offers barbers and stylists a surgically-close cut, making it perfect for quick, precise, and effortless skin and bald fades. For your convenience, the 5-Star Balding Clipper comes with all accessories required for use. Get the cleanest bald fades with this unique clipper by Wahl Professional!

## FEATURES

- Ultra-close full-size trimming blade
- Ideal for outlining
- Creates all-over even cut with the use of attachment combs
- Full Head Balding

## INCLUDES

- 2 Guide combs (1.5 and 4.5mm)
- Blade oil
- Cleaning brush
- Pre-Shave brush
- Flat-top hairstyling comb



# 5 STAR SERIES VANISH SHAVER

An innovative suspension system allows the cutting bars to move independently, hugging every neck and facial contour to make every last hair disappear.

The 5 Star Vanish shaver features new independent pop-out foil bars. Save time and money in maintenance by replacing single foils instead of full shaver heads. With a 100+ run time on a single charge, the 5 Star Vanish – powered by a premium lithium-ion battery – will get most barbers through a typical day without a recharge.

Nothing ruins workflow more than an unknown charge level. We equipped the 5 Star Vanish with a big, brilliant, easy-read fuel gauge right on the front, so you can focus on the finish.

## FEATURES

- Type: Professional Cordless Shaver
- Run time: 100 min
- Charge time: 50 min
- Motor: Rotary motor 9,000 rpm
- Blades: 3022905 Reciprocating cutters with hypoallergenic gold foil
- Cutting length: 0.05mm
- Cutting width: 48 mm
- Product weight: 175g
- Cable length: 2.4m (plug-in transformer) Includes: Foil guard, blade brush, clean brush, transformer

## INCLUDES

- Professional Finishing Tool
- Foil Guard
- Power Supply
- Pre-Shave Brush
- Cleaning Brush
- Operating Instructions





# BARBER POLE



Brand new Electronic barber poles available. Barber poles have long been synonymous in identifying a BarberShop. Add this Beauty to your existing BarberShop.

This Pole is internally lit and rotates.

- Barber Pole Electric – red blue and white
- Code: BMBO1
- Size: 87x23x32cm
- Power: 26W
- With 9W energy saving lamp in cap



# HOODED DRYERS



WALL MOUNT HOOD  
DRYER 3 - SPEED



STANDING HOOD  
DRYER 2 - SPEED



IONIC STANDING HOOD  
DRYER 3 - SPEED



STANDING HOOD DRYER  
2 - SPEED



STANDING HOOD  
DRYER 3 - SPEED



IONIC WALL MOUNT  
HOOD DRYER 3 - SPEED





**KIEPE**  
PROFESSIONAL

General Catalogue 2025



**2025**



BORN TO INSPIRE





STANDARD HAIR SCISSORS

PRO Cutcode 2127

Size	inch	4.5
	cm	12

**Features**  
Scissors with a classical and multipurpose line for professional people & schools.

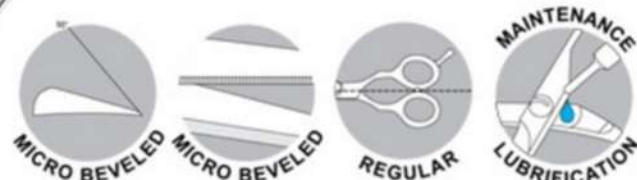


STUDIO TECHNO

RELAX-TH ergonomiccode 2231

Size	inch	5.5
	cm	14

**Features**  
Thinning scissors with 38 teeth.  
Cutting ration equal to 40%.



STUDIO TECHNO

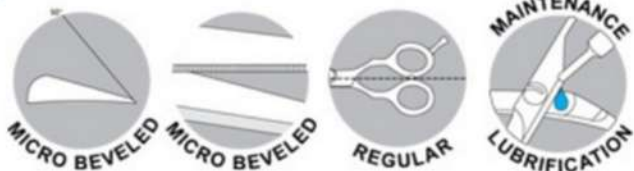
RELAX ergonomic

code 2233

Size	inch	5	5.5	6
	cm	13	14	16

Features

Wide & precise, they allow precision work keeping softness in the cut sensation.



STUDIO TECHNO

FORMULA ergo-anatomic

code 2235

Size	inch	5	5.5
	cm	13	14

Features

Natural and spontaneous handling for a unique comfort during the most particular works.





STUDIO STYLE

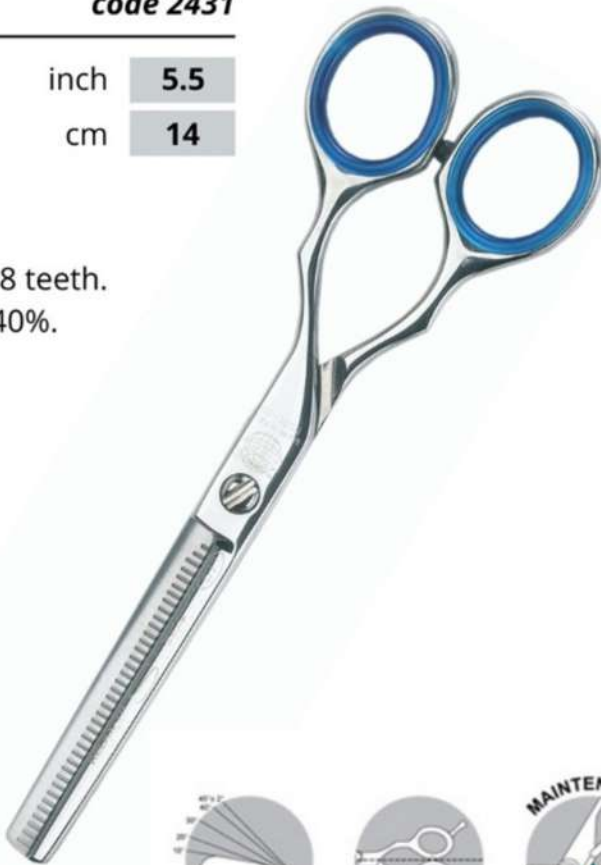
RELAX-TH ergonomic

code 2431

Size	inch	5.5
	cm	14

Features

Thinning scissors with 38 teeth.  
Cutting ration equal to 40%.



STUDIO STYLE

RELAX ergonomic

code 2433

Size	inch	5	5.5	6
	cm	13	14	16

Features

Scissors with an innovative and functional line. Ideal to thin and for cuts of high precision.



**HD SERIES**

Black / White

code 2437

Size	inch	5.5
	cm	14

**Features**

- Stainless Steel Aisi 420
- Tempered in checked atmosphere
- Razor Wire Cutting
- Removable Finger Rest
- Soft finger support
- Light & balanced - suitable for all requirements of the cut
- New sharpening "Extreme Grid" for softness in the cut



**BLACK SERIES**

Black

code 2450

Size	inch	5.5	6
	cm	14	16

**Features**

- Stainless Steel Aisi 420
- Tempered in checked atmosphere
- Razor Wire Cutting
- Removable Finger Rest
- Soft finger support
- Light & balanced - suitable for all requirements of the cut
- New sharpening "Extreme Grid" for softness in the cut





GOLD SERIES

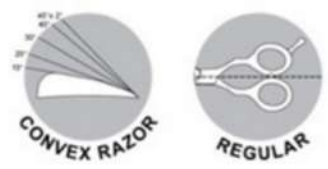
Gold

code 2451

Size	inch	5.5
	cm	14

Features

- Stainless Steel Aisi 420
- Tempered in checked atmosphere
- Razor Wire Cutting
- Removable Finger Rest
- Soft finger support
- Light & balanced - suitable for all requirements of the cut
- New sharpening "Extreme Grid" for softness in the cut



SILVER SERIES

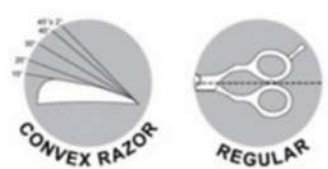
Silver

code 2452

Size	inch	5.5
	cm	14

Features

- Stainless Steel Aisi 420
- Tempered in checked atmosphere
- Razor Wire Cutting
- Removable Finger Rest
- Soft finger support
- Light & balanced - suitable for all requirements of the cut
- New sharpening "Extreme Grid" for softness in the cut



COPPER SERIES

Copper

code 2453

Size	inch	6
	cm	16

Features

- Stainless Steel Aisi 420
- Tempered in checked atmosphere
- Razor Wire Cutting
- Removable Finger Rest
- Soft finger support
- Light & balanced - suitable for all requirements of the cut
- New sharpening "Extreme Grid" for softness in the cut



BLACK SERIES

Black - Thinning

code 2470

Size	inch	5.5
	cm	14

Features

- Stainless Steel Aisi 420
- Tempered in checked atmosphere
- Razor Wire Cutting
- Removable Finger Rest
- Soft finger support
- Light & balanced - suitable for all requirements of the cut
- New sharpening "Extreme Grid" for softness in the cut



KIEPE<sup>®</sup> PROFESSIONAL





COPPER SERIES

Copper - Thinning

code 2473

Size	inch	5.5
	cm	14

Features

- Stainless Steel Aisi 420
- Tempered in checked atmosphere
- Razor Wire Cutting
- Removable Finger Rest
- Soft finger support
- Light & balanced - suitable for all requirements of the cut
- New sharpening "Extreme Grid" for softness in the cut



STANDARD HAIR SCISSORS

Standard - Thinning

code 272

Size	inch	6.5
	cm	17

Features

- Carbon stainless steel
- Micro serrated edge for straight cuts
- Ice-tempered in checked atmosphere

Thinning scissors. half blade, studied for a more general use. Cutting ratio equal to 30%.



STANDARD HAIR SCISSORS

Coiffeur Super Line

code 277

Size	inch	7
	cm	18

Features

- Carbon Stainless Steel
- Micro serated edge for straight cuts
- Ice-tempered in checked atmosphere

Linear and tough scissors for a soft and precise cut.



MONSTER CUT SERIES

Offset Scissors

code 2812

Size	inch	6.5
	cm	17

Features

- Japanese Steel
- Ice-tempered in checked atmosphere
- Hardness equal to 58 HRC
- Ergonomic
- Tension regulating screw just 1mm high
- Excellent razor's edge for slide haircuts even with dry hair
- Laser control
- Model suitable for very alert and exigent stylists.





**MONSTER CUT SERIES**

*Semi-offset Scissors*

**code 2813**

Size	inch	6	6.5
	cm	16	17

**Features**

- Japanese Steel
- Ice-tempered in checked atmosphere
- Hardness equal to 58 HRC
- Ergonomic
- Tension regulating screw just 1mm high
- Excellent razor's edge for slide haircuts even with dry hair
- Laser control
- Design and style with craned ring for a lesser strain.



**GALAXIS SERIES**

*Left handed scissors*

**code 288**

Size	inch	5.5
	cm	14

**Features**

- Enriched carbon stainless steel Aisi420
- Blades sharpened with "Diampond Shard" system
- Tempered in checked atmosphere
- Razor's edge
- Matt finishing



**KIEPE<sup>®</sup> PROFESSIONAL**



MONSTER CUT SERIES

Semi-offset Blendingcode 2898T30

Size	inch	6
	cm	16

Features

- Japanese Steel
- Ice-tempered in checked atmosphere
- Hardness equal to 58 HRC
- Ergonomic
- Tension regulating screw just 1mm high
- Excellent razor's edge for slide haircuts even with dry hair
- Laser control
- Thinning with 30 teeth for a cutting ratio equal to 30%
- Precision & softness in the tapering for volume control



PET SCISSORS SERIES

Straight Bladescode 2912

Size	inch	7
	cm	18

Features

- 440C Steel with high carbon content
- Tension regulating screw easily & precisely adjustable
- One edge with micro serration and one razor edge
- Matt finishing
- Tempered in checked atmosphere with a blade's toughness equal to 59-61 HRC





PET SCISSORS SERIES

Thinning | Straight Blades

code 2914

Size	inch	6.5"
	cm	17

- Features
- 440C Steel
  - Tension regulating screw easily & precisely adjustable
  - Matt finishing
  - Tempered in checked atmosphere



COEXISTENCE

How can technology and tradition live together?

At KIEPE Professional we have always combined high-tech with the skillful skills of our master craftsmen.

We need technology to have extreme precision, while the skillful and wise hands can give our products that added value that we would never be able to achieve using only soulless machines.

As a skilled tailor sews his drapes we give that extra touch to each of our hairdressing scissors, comb or brush...

...each tweezers, each haircutter or underwired for aesthetics is carefully checked over and over again both with electronic eyes and with the eye of those who have gained experience in years of practice.

Our hairdryers, hairdressers and hair straighteners have a soul... that soul is given by skillful hands that know how to make a creation almost alive...

...only when you try a product of KIEPE Professional you can feel that you have not only bought an object of common use, but a companion of style, that style that only you can have.





PRO Cut

Code 120

Classic razor, half blade, for beard and cut.

---



PRO Cut

Code 121

Classic razor, half blade, with thinning comb

---



FREESTYLE

Code 126

Classic razor, full blade, for beard and cut with a very good system for the internal blade fixing

---



STYLE PRO

Code 127

Razor for beard, cut and thinning with handle and blade holder made of plastic

---





PRO Cut Color

Code 128

Classic razor, half blade for beard and cut with comb for thinning.  
Colour: Assorted

---



PRO Cut Aluminium

Code 129

Classic razor, half blade for beard and cut.  
Colour: Black

---



Fashion Blades

Code 0441

Box with 10 blades for razors 122 and 123. Steel blades with platinum plating; thanks to their special milling, double duration of the cutting part.

---



**KIEPE**  
PROFESSIONAL



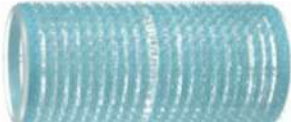
<b>Code 10016</b>	D16 x 63mm
Blue	12pcs p/bag



<b>Code 10020</b>	D20 x 63mm
Green	12pcs p/bag



<b>Code 10024</b>	D24 x 63mm
Pink	12pcs p/bag



<b>Code 10028</b>	D28 x 63mm
Light Blue	12pcs p/bag



<b>Code 10032</b>	D32 x 63mm
Yellow	12pcs p/bag



<b>Code 10036</b>	D36 x 63mm
Red	12pcs p/bag



<b>Code 10040</b>	D40 x 63mm
Blue	12pcs p/bag



<b>Code 10044</b>	D44 x 63mm
Pink	12pcs p/bag







**KIEPE**<sup>®</sup>  
PROFESSIONAL



11010 | D10 x 240mm | Yellow | Bag of 12



11012 | D12 x 240mm | Red | Bag of 12



11014 | D14 x 240mm | Blue | Bag of 12



11016 | D16 x 240mm | Orange | Bag of 12



11018 | D18 x 240mm | Grey | Bag of 12



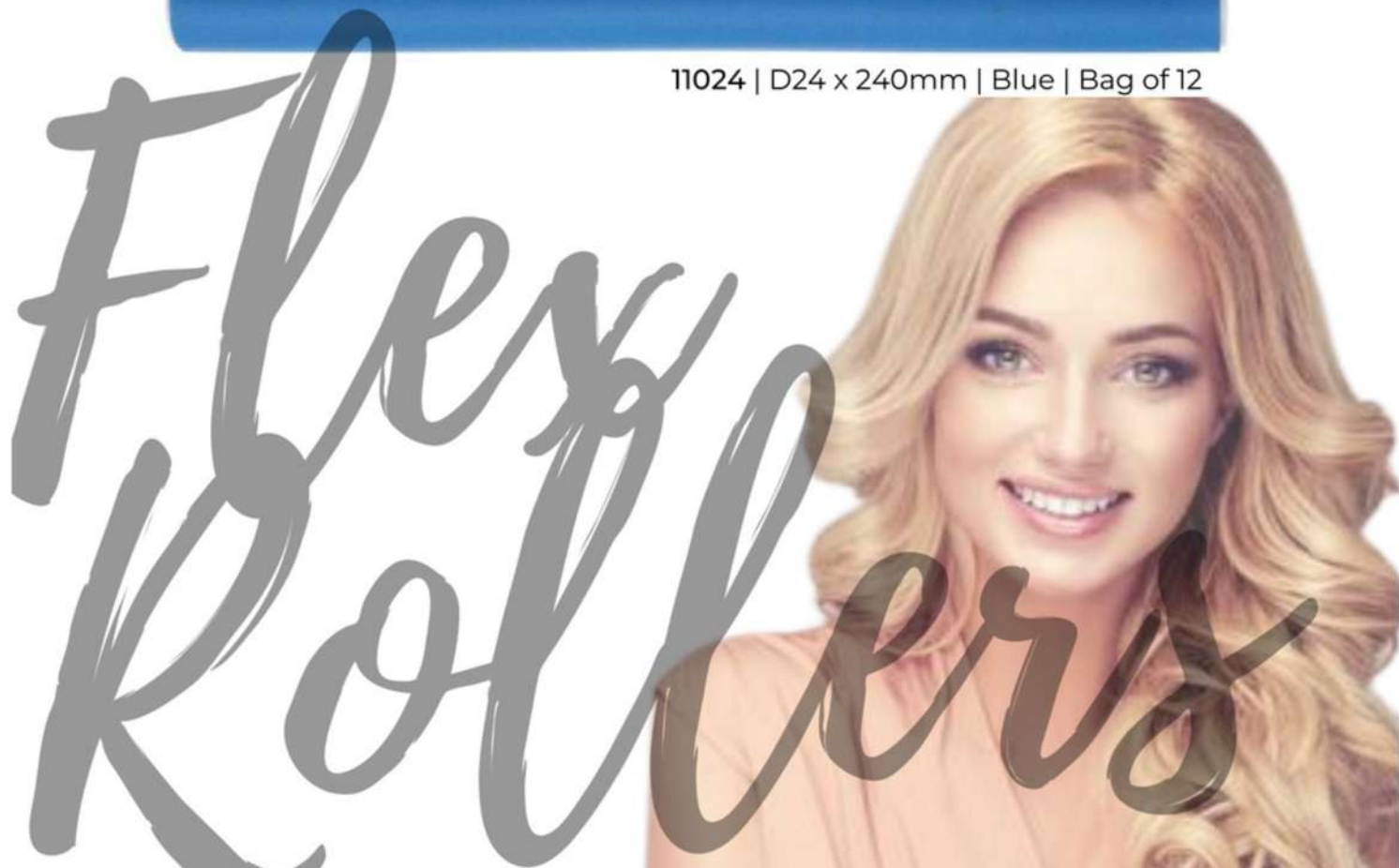
11020 | D20 x 240mm | Purple | Bag of 12



11022 | D22 x 240mm | Green | Bag of 12



11024 | D24 x 240mm | Blue | Bag of 12





art.12006

8008981120061

perm rods D6 x 91mm w rubber band

BAG 12 pcs



art.12007

8008981120078

perm rods D7 x 91mm w rubber band

BAG 12 pcs



art.12008

8008981120085

perm rods D8 x 91mm w rubber band

BAG 12 pcs



art.12009

8008981120092

perm rods D9 x 91mm w rubber band

BAG 12 pcs



art.12011

8008981120115

perm rods D11x91mm w rubber band

BAG 12 pcs



art.12013

8008981120139

perm rods D13x91mm w rubber band

BAG 12 pcs



art.12101

8008981121013

flat rubber band - L 85mm

BAG 50 pcs

Perm  
Rods







HAIR ACCESSORIES



**Butterfly Clips - 12pcs**  
Black / White - L 82mm  
Code 13005



**Crocodile Clips - 12pcs**  
Black / White - L 112mm  
Code 13003



**Carbon Clips - 12 pcs**  
L 115mm  
Code 13001



**Colourful Pins - 50 pcs**  
Code 10241



**Flat Rubber Band - 50pcs**  
L 85 mm  
Code 12101



**KIEPE**  
PROFESSIONAL

HAIR ACCESSORIES



**Highlight Cap with Hook**  
Code 5011



**Tint Brush - With hook**  
White - 221x56mm  
Code 13104



**Tint Bowl with Rubber**  
Code 13106



**Tint Brush - Medium**  
Black - 180x36mm  
Code 13103



**Silver Aluminium Foil Alloy - 400g**  
12cm - 15 micron  
Code 13121



**Tint Brush - Large**  
Black - 215x58mm  
Code 13102



**Silver Aluminium Foil Sheets - 200pcs**  
15 micron  
Code 13124



**Colouring Board**  
Black - L 205mm  
Code 13101



# MANICURE & PEDICURE



**Toe Nail Scissor - Stainless Steel**  
Straight blades  
Code 252R



**Nail Cutter - Stainless Steel**  
Synthetic Nails  
Code 1199



**Corn Cutter - Stainless Steel**  
Code 452



**Cuticle Pusher - Stainless Steel**  
Code 413



**Cuticle Nipper - Stainless Steel**  
Code 0608.10.5



**Corn Cutter Blades**  
Box with 10 blades  
Code 0131sm



**Nail Buffers**  
Pack of 6  
Code 318



Suitable for the superficial smoothing of the lamina and the reconstruction finishing.



**KIEPE**  
PROFESSIONAL

# BEAUTY ACCESSORIES



**Beauty Drop Professional Tweezers - Stainless Steel**  
4" - Assorted colours available  
Code B.140.116



**Disposable Cartene Massage Bed Covers**  
25 pcs - 170X200 cm  
Code 13235



**Comedone Extractor - Stainless Steel**  
Double Loop  
Code 323



**Latex Sponges**  
2 pcs  
Code 323



**K-Tweezers - Stainless Steel**  
160x160x180mm - Assorted colours available  
Code B.140.154



# VEAUDRY™

TECHNOLOGY THAT CARES

## Tourmaline Ceramic Straightening Flat Irons

Ensure the health and vivacity of your hair by using the salon-quality myStyler to create your own unique style. The myStyler uses Natural Tourmaline Technology to ensure that your hair is protected and your style has a natural sheen and smooth finish.

### myStyler black

- Variable temperature control from 130c to 230c for all hair types - giving you full control for your hair's requirements.
- 24mm wide floating plates.
- Dual-micro-chip temperature control ensures even heat distribution.
- Safety features, including automatic safety switch-off & maximum temperature control.
- Tourmaline Ceramic Floating Plates.
- Rapid heat-up time in seconds
- Professional salon length 3m swivel cord.
- Heat resistant bag and Comb included.
- 1 year guarantee



### myStyler COLOSSAL

- Variable temperature control from 150c to 230c for all hair types - giving you full control for your hair's requirements.
- 43mm wide floating plates.
- Dual-micro-chip temperature control ensures even heat distribution.
- Safety features, including automatic safety switch-off & maximum temperature control.
- Tourmaline Ceramic Floating Plates.
- Rapid heat-up time in seconds
- Professional salon length 3m swivel cord.
- Heat resistant bag and Comb included.
- 1 year guarantee



# VEAUDRY™

TECHNOLOGY THAT CARES

## Interchangeable curling system

Perfectly defined, sexy curls are made easy with the Veaudry myCurl interchangeable system. The revolutionary Tourmaline Ceramic barrels give you long lasting curls and waves whilst locking in moisture for perfect, healthy & shiny hair.

This is the myCurl CLAMP DUO and includes 2 curlers with clamps (1 x 25mm and 1 x 38mm) - adding this Duo to your myCurl BASE allows you to create more definitive curls in a multitude of sizes. Simply click a barrel into the base, select your temperature, wrap your hair around the barrel, close the clamp for a few seconds and release. You will require the myCurl base for this accessory to work.



This is the myCurl WAND DUO and includes 2 wands (1 x 19-25mm and 1 x 25-38mm) - adding this Duo to your myCurl BASE allows you to create soft and sassy curls in a multitude of sizes. Simply click a wand into the base, select your temperature, wrap your hair around the barrel for a few seconds and release. You will require the myCurl Base for this accessory to work.





# VEAUDRY™

## TECHNOLOGY THAT CARES

### Interchangeable curling system

Perfectly defined, sexy curls are made easy with the Veaudry myCurl interchangeable system. The revolutionary Tourmaline Ceramic barrels give you long lasting curls and waves whilst locking in moisture for perfect, healthy & shiny hair.

This is the myCurl TRIPLE BARREL WAVER which allows you to easily create those soft, sexy beach waves in minutes. Simply click the attachment onto the your mycurl Interchangeable BASE, turn it on and you are ready to style. You will require the myCurl base for this accessory to work.

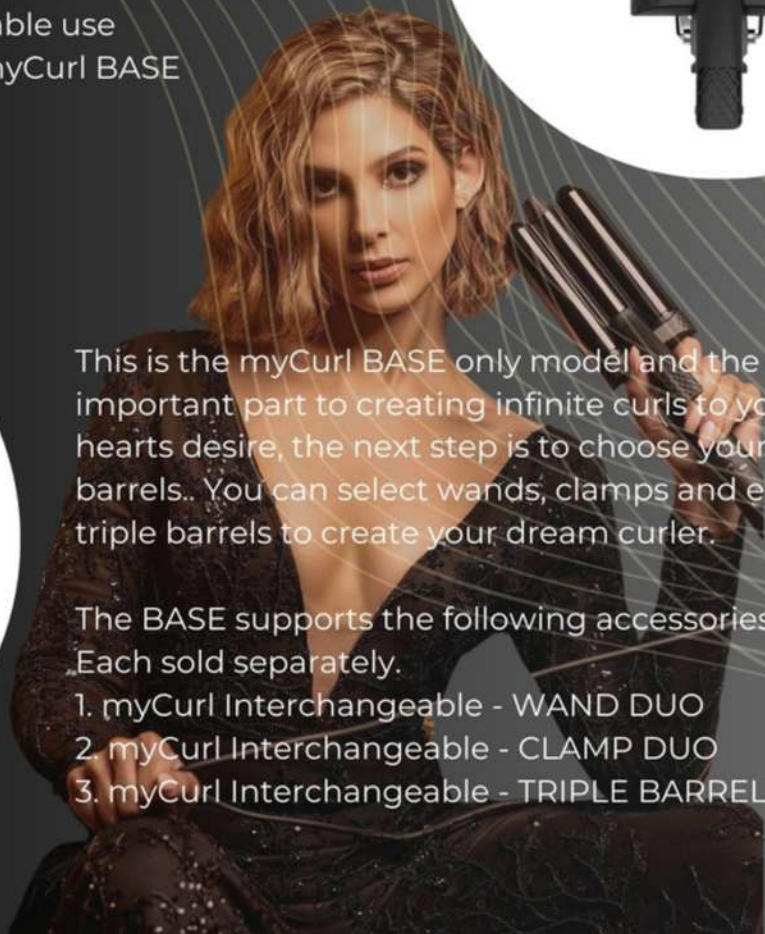
- 22mm Triple Barrel Waver
- Tourmaline & Ceramic Barrels
- Stay Cool Tip for comfortable use
- Rapid Heat up with the myCurl BASE
- SAFE for all hair types



This is the myCurl BASE only model and the most important part to creating infinite curls to your hearts desire, the next step is to choose your barrels.. You can select wands, clamps and even triple barrels to create your dream curler.

The BASE supports the following accessories:  
Each sold separately.

1. myCurl Interchangeable - WAND DUO
2. myCurl Interchangeable - CLAMP DUO
3. myCurl Interchangeable - TRIPLE BARREL





# VEAUDRY™

## TECHNOLOGY THAT CARES

### myDryer Compact

Unleash your styling power with Veaudry myDryer. This professional-grade hair dryer delivers ultra-fast drying for salon-quality results. With a powerful 2200W motor, three-speed settings with a cool shot function, myDryer ensures superior performance and precise control over your styling process. Designed for convenience and comfort, myDryer features an ergonomic grip and an extra-long cord for easy maneuverability.

Its lightweight and compact design makes it perfect for styling on the go. Choose from three stunning colors - Black, White, and Rose Gold - to match your style and elevate your hair game. Experience powerful performance and effortless styling with Veaudry myDryer.

- 2200 watt professional AC Motor
- Tourmaline, Ceramic & Ionic technology
- 3 Heat settings
- 2 Speed settings
- Cool shot function
- Ergonomic design
- 2 x precision Nozzles (1 clip-in and 1 slide-on to suit your preference)
- 1 x Diffuser
- 3m Professional length power cable
- Low lever sound experience <82>dbS
- Airflow:  $\geq 80\text{m}^3/\text{h}$
- Weight = 475g ( without cord or nozzle )



myDryer  
White



myDryer  
Rose Gold



myDryer  
Black



# THE BEAUTICIAN AND THE ARTISAN

FROM HUMBLE BEGINNINGS TO WORLDWIDE PIONEERS

D A P P E R  
D A I N T Y.®

## HOW IT ALL BEGAN...

It was the summer of '79 and Dutch beautician, Reina Castille, owner of a local hair salon was heading home when the chain on her bicycle broke. She was pushing her bike along when Bertram Garret, an artisan brush maker, saw her outside his storefront and offered assistance. Bertram and Reina hit it off and soon the two began putting their passion and craftsmanship together to create some of the world's most innovative brushes. They began with humble beginnings selling their goods at local craft fairs under the name "Dapper and Dainty", an acknowledgment to the stylish and elegant beauty that their brushes bring to both women and men.

## MOVING FORWARD...

From those first artisanal brushes that made them local legends, to now the worldwide pioneers of innovative brushes we know today; Dapper & Dainty has stayed true to a very simple idea: to offer revolutionary brushes with extraordinary craftsmanship.



# SUPER SLIM COLLECTION

Revolutionary super lightweight design  
with a slim hollow handle for easy styling



### Lightweight, sleek, stylish & fun

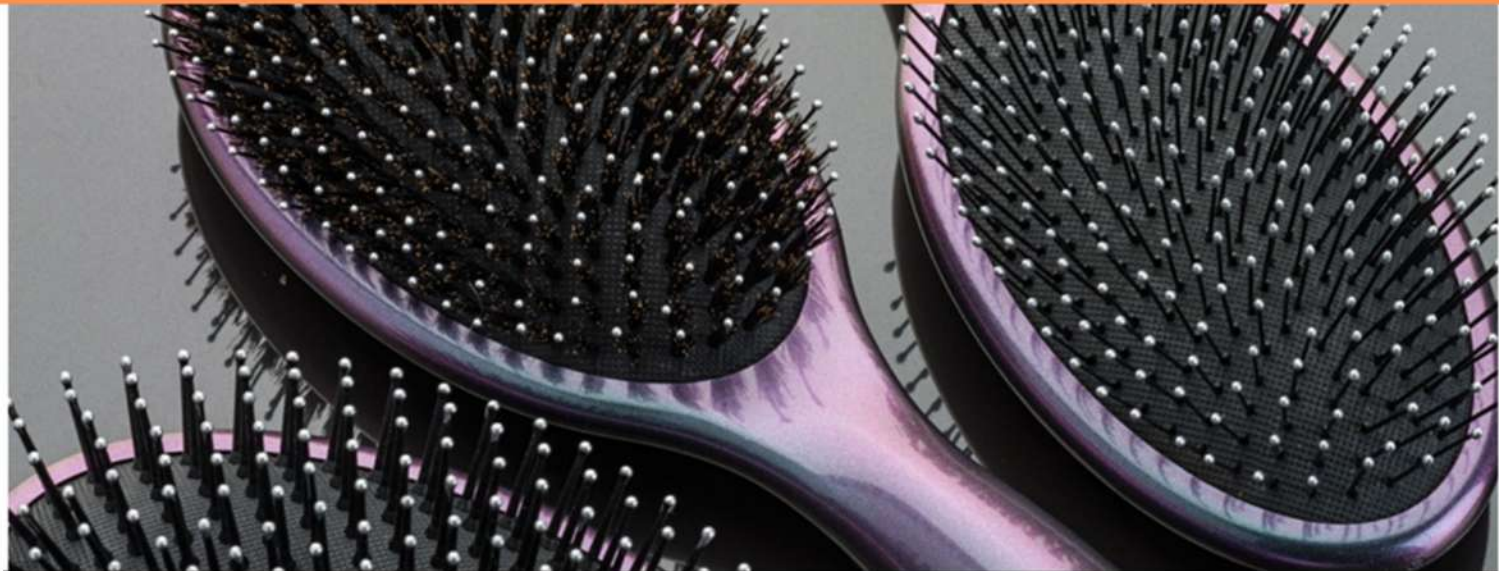
Super lightweight design with a slim, hollow handle for styling without strain or tiredness. The comfortable soft cushion and varying bristle types allow these brushes to take on any job. Regardless of your hair type and length. Each brush provides styling and detangling without snags.



### Bristles of all kinds and shapes

Whether you like ball-tipped bristles, boar bristles, nylon bristles, extreme flex bristles, or a combination of two, this line offers what you're looking for.

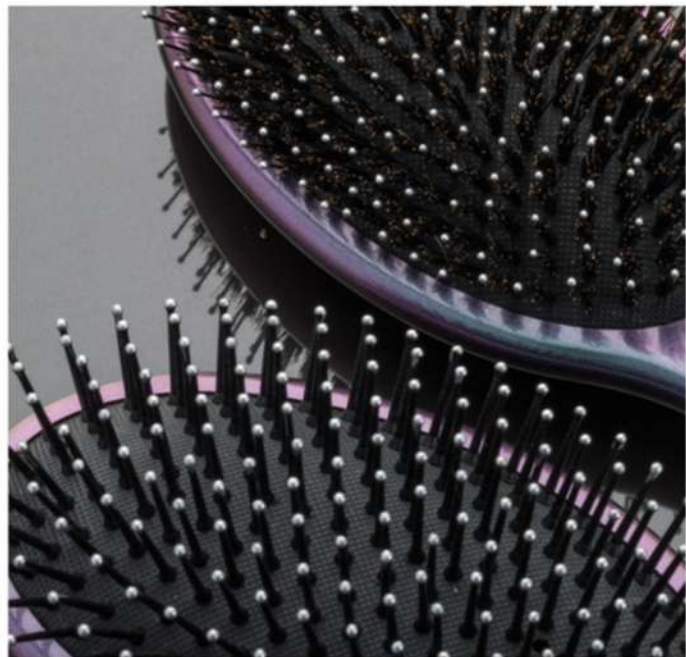




# CHAMELEON

## COLLECTION

Lightweight body with a color shifting finish  
allows for snag-free styling without fatigue



### Elegant, slender & sexy

Any hair type and length can enjoy snag-free styling, leaving hair smooth and ready for the day. Ball-tipped bristles accompanied with a flexible soft cushion provide a relaxing scalp massage. These super lightweight hollowed handles and sleek slim bodies allow for styling without fatigue.

### Do a double take

These head turning chameleon designs change color depending on the angle you hold them.



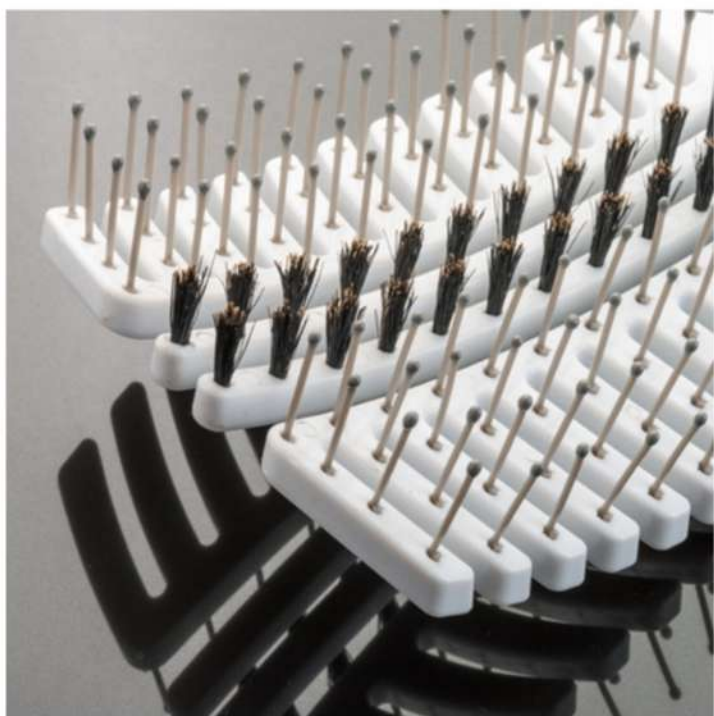




# MAX-FLO

## COLLECTION

Unique design accelerates the drying process by allowing air to circulate directly to the roots



### Unique, airy & flexible

The name says it all. These brushes are no joke when it comes to drying your hair. Their unique design accelerates the drying process by allowing air to circulate directly to the roots. Blends of varying bristles including ionic 100% boar hair help to bring natural oils from the scalp outward to naturally condition hair. A built-in convenient storage is incorporated at the base of the handle to hide hair pins.

### Built-in storage

Leave the bag of pins at home. Convenient hidden storage in base of handle allows you to take pins on the go.







# SCALP CARE COLLECTION

2-tier nylon bristles infused with keratin & Moroccan Argan Oil for a massaging scalp experience



### Innovative, practical & handy

Why let scalp care stop after the shower? These brushes feature patented technology and are infused with keratin & Moroccan Argan Oil. Their 2-tier nylon bristles are fitted with comfortable ball tips for a massaging scalp experience. A non-slip grip ensures an easy hold while styling.

### Get what you want

Bristles of all kinds and shapes! Why 2 different lengths you ask? The longer bristles penetrate the hair, reaching the scalp, promoting healthy hair follicles, while the shorter row works hard on detangling wet or dry hair.







### Modern, breathable & chic

Super lightweight design with a slim, hollow handle for styling without strain or tiredness. The comfortable soft cushion and varying bristle types allow these brushes to take on any job. Regardless of your hair type and length. Each brush provides styling and detangling without those nasty snags.

### Let your hands breathe

A specially designed slotted handle ensures air flow during styling to prevent sweaty hands. During use with wet hair, the rubberized grip provides extra handling to make sure the job gets done without any slip ups.







# PYTHON COLLECTION

Imitation python skin handle provides excellent grip and control for snag-free styling



### Fun, fashionable & exotic

These daily brushes don't disappoint when it comes to function and style. With smooth ball-tipped bristles, enjoy styling your hair without snags or discomfort. The stylish print handle provides excellent grip and control that is great for all types of hair.

### Unleash the animal inside

An exotic pattern that'll make you go wild! Not only is it important to have a brush that fits your needs, but one that fits your style too. Skip the boring brushes and take a walk on the wild side with this exotic print brush series.







# GLOSSY WOOD COLLECTION

Boar and nylon bristles smooth and shine hair without breaking and damaging



### Classic, durable & sleek

Prevent breakage and boost manageability with this series of brushes that feature 100% boar and nylon bristles. These brushes fit your everyday needs and can gently style through both wet and dry hair of any type. The natural boar bristles caress the scalp and enhance shine by distributing the hair's natural oils.

### Tame tangles & boost shine

100% Natural boar bristles ensure a smooth and shiny look without breaking and damaging hair. The high quality bristles are affixed to an ergonomically designed glossed, wooden handle that fits perfectly in the palm of your hand.







80001



80002



80003



80004



80005



80006



80007



80008



80009



80010



80011



80012



80013



80014



80015



80016



80017



80018



80019



80021



80022



80023



80024



80025



80026



80027



80028



80029



80030



80031



80032



80033



80034



80035



80036



80037



80038



80039



80040



80041



80042



80043



80044



80045



80046



80047

DAPPER & DAINTY®

# RAPPLE

## SALON PRODUCTS

### HAIR, BEAUTY & BARBER

---

#### JOHANNESBURG SHOWROOM

UNIT B1 DECO PARK  
NORTHLANDS  
NORTHRIDING  
JOHANNESBURG  
**+27 10 085 0787**

#### CAPE TOWN SHOWROOM

313 DURBAN ROAD  
UNIT 3 (GROUND FLOOR) SUNTYGER TYGER VALLEY  
BELLVILLE  
CAPE TOWN  
**+27 21 981 0032**

[ORDERS@RAPPLE.CO.ZA](mailto:ORDERS@RAPPLE.CO.ZA)

[WWW.RAPPLE.CO.ZA](http://WWW.RAPPLE.CO.ZA)

Scan the QR Code

